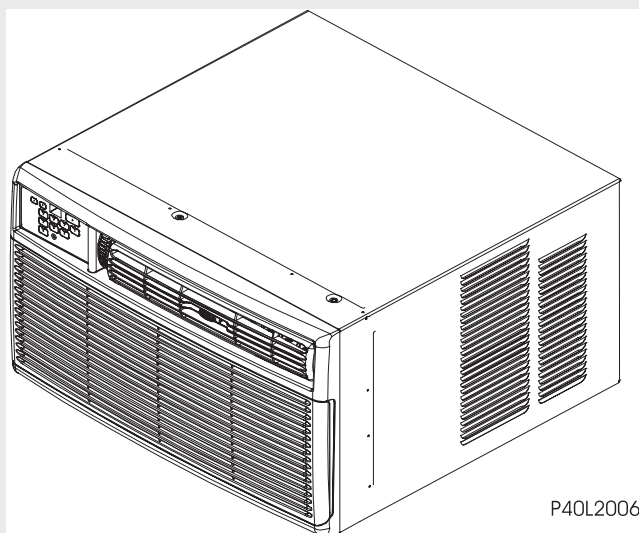


# Frigidaire

## Factory Parts Catalog



P40L2006

Product No.	FAS186N2A2
Series	heavy duty
Volts	230/208
BTU-Cooling	18500 BTU
Wiring Diagram	5995407417
Owner's Guide	309000855
Market	North America

 **Electrolux**

Electrolux Major Appliances  
North & Latin America  
P.O. BOX 212378  
AUGUSTA, GA 30917

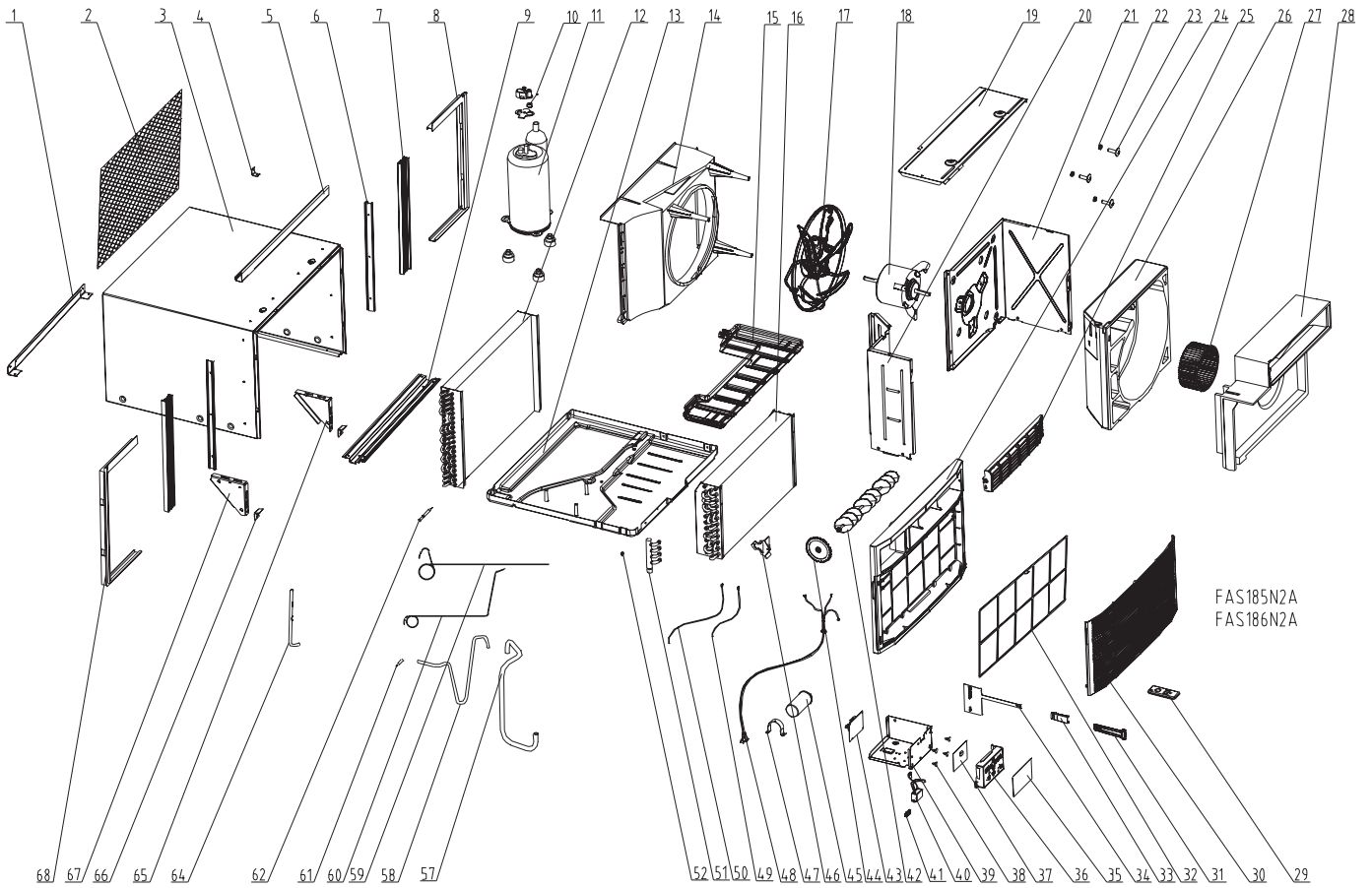
Publication No.  
**5995437950**  
05/05/27  
(EN/SERVICE/WC)  
099

**ROOM AIR  
CONDITIONER**

**Model No.  
FAS186N2**

Copyright © 2005 Electrolux Home Products, Inc.  
All rights reserved.

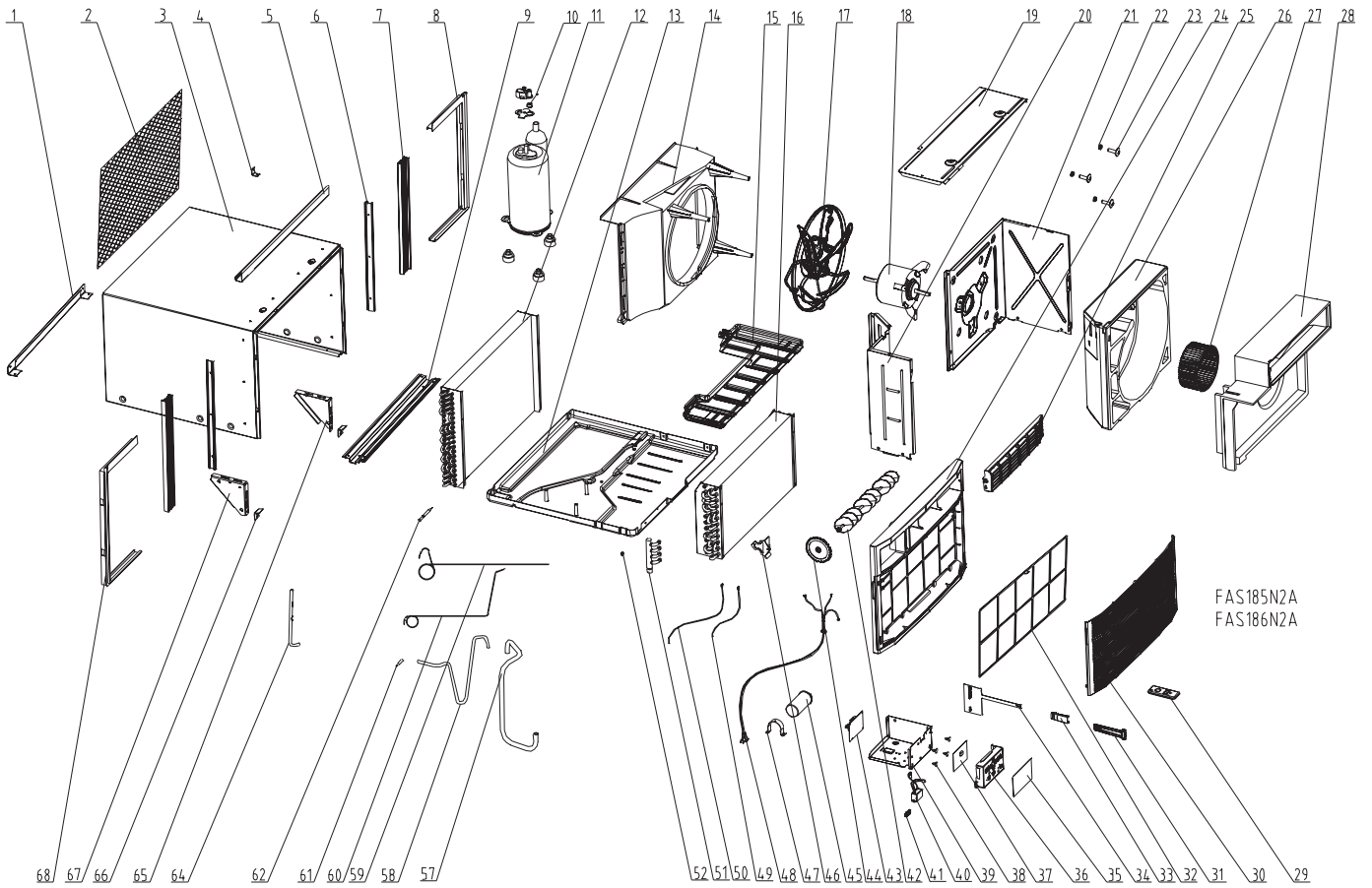
**RECOMMENDED SPARE PARTS**



**RECOMMENDED SPARE PARTS**

POS. NO	PART NO.	DESCRIPTION
1	5304414097	Rail, cabinet bottom, rear
2	5304408741	Grille, rear panel, aluminum
3	309623906	Cabinet, wrapper/sleeve
4	5303211056	Bracket, sash lock
5	5304414116	Rail, cabinet top, front
6	5304414933	Retainer, shutter mount, cabinet side
7	309645602	Shutter, accordion panel, RH/LH, window closure
8	5304414929	Frame, shutter, gray, RH, extension
9	5304416310	Rail, cabinet bottom, front
10 #	5304432854	Overload Protector
11	309603124	Compressor
12 #	5303306719	Condenser
13	309632910	Base, compressor mtg., with studs
14	309623201	Shroud, cond fan motor
15	309623501	Tray, evap drip
16 #	309634201	Evaporator
17 #	5303311048	Fan Blade, with clamp
18 #	309630613	Motor, fan, 1 Speed
19	309630302	Cover, blower wheel, top
20	309623602	Bulkhead, control system
21	309623403	Bulkhead, air system
22	5300105402	Grommet, motor, (3)
23	5303317224	Screw, indt hex head, 10-16, (3)
24	309900101	Frame, cabinet front
25	309900301	Louver, horizontal
26	309630102	Housing, blower scroll
27 #	309633001	Blower Wheel, plastic, with clamp
28	309630203	Plate, scroll cover
29 #	309902201	Remote Control, transmitter, with lcd
30	309900201	Panel, front grille
31	309900601	Handle, vent opener
32	309639001	Filter, micro-biologic, framed
33	309902801	Detent, vent handle
34	309321402	Door, vent, with actuator
35	309901701	Overlay, control display
36	309900501	Enclosure, input pcb, control panel
37 #	309901601	PC Board, input/display
38	5304413781	Hardware, PCB support
39	309630404	Control Box
40 #	309900701	Ionizer
41	309111201	Grommet, wire protector
42	309904601	Louver, vertical
43 #	309901501	PC Board, power, 230 V, variable speed
44	309900401	Wheel, louver adjuster
45 #	5304426451	Capacitor, 450 V, 35+6 mfd
46	5304414108	Holder, thermistor clip, 5/16"
47	5303303077	Strap, capacitor mtg.
48 #	309343134	Power Cord, ELECT W/LCIDI, 16 AWG, 230 V, type C
49 #	309201602	Sensor, thermistor, ambient temp
50 #	309201603	Sensor, thermistor, evap defrost
51 #	309330504	Manifold Assembly, with rings

**RECOMMENDED SPARE PARTS**



**RECOMMENDED SPARE PARTS**

---

POS. NO	PART NO.	DESCRIPTION
52	5303302254	Nut, expansion type
57 #	309377701	Tube, suction, copper
58 #	309371701	Tube, discharge, copper
59 #	309377901	Tube, capillary, copper, top, formed
60 #	309377801	Tube, capillary, copper, bottom, formed
61 #	309111002	Fitting, reducer .313 OD, .114/.117 ID, copper tube
62 #	5303290357	Strainer
64 #	5304426970	Tube, process, copper
65	5304414105	Bracket, cab support, RH
66	3001815	Support, angle bracket, window sill mt.
67	5304414106	Bracket, cab support, LH
68	5304414928	Frame, shutter, gray, LH, extension

# WIRING DIAGRAM

