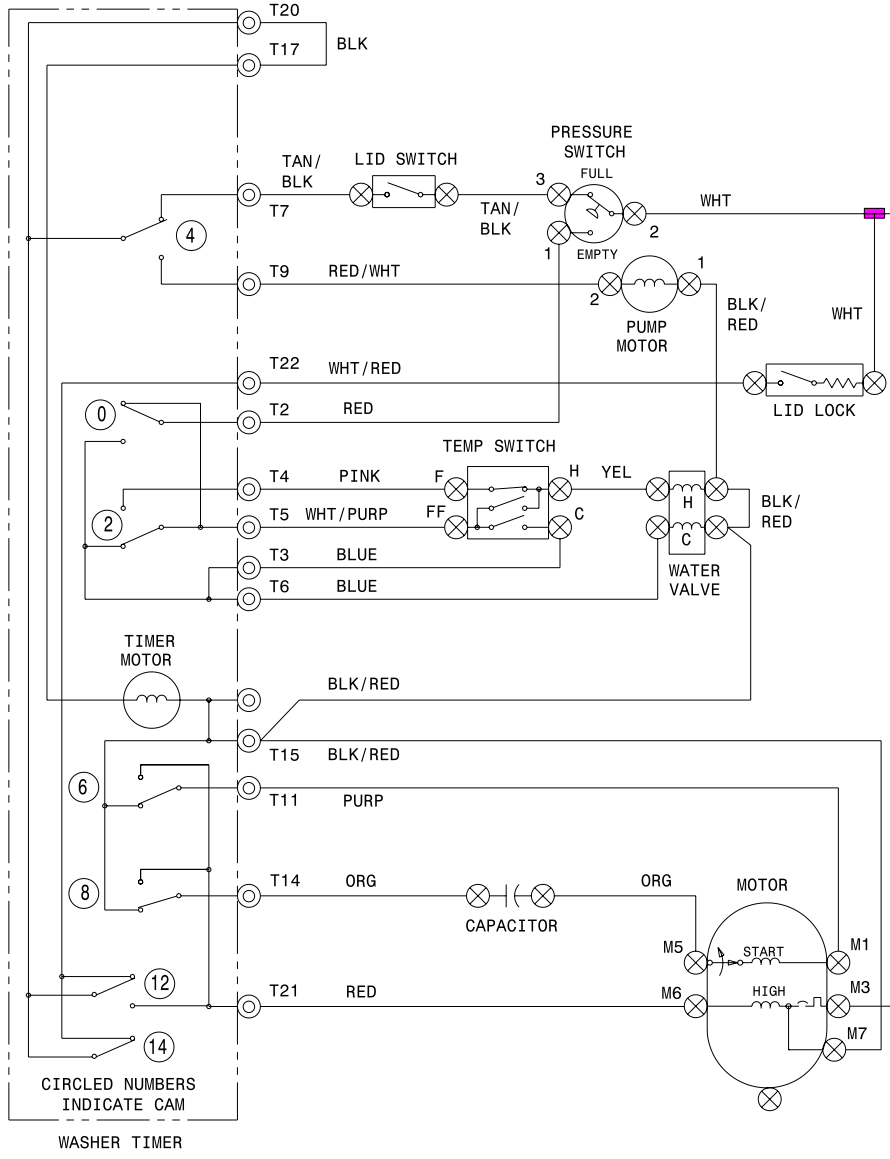
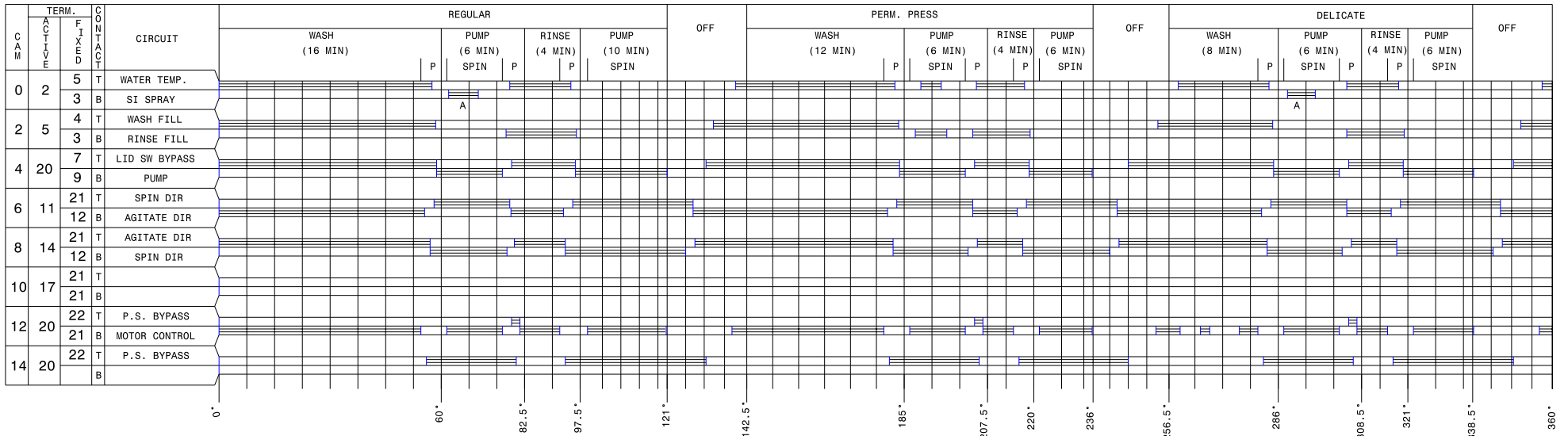
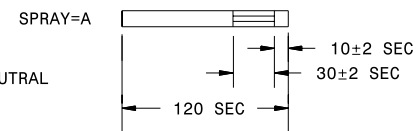


CAUTION: DISCONNECT ELECTRIC CURRENT BEFORE SERVICING. LABEL ALL WIRES PRIOR TO DISCONNECTION WHEN SERVICING CONTROLS. WIRING ERRORS CAN CAUSE IMPROPER AND DANGEROUS OPERATION. VERIFY PROPER OPERATION AFTER SERVICING.



SUBINTERVAL SPRAY DETAIL



WIRING CODES

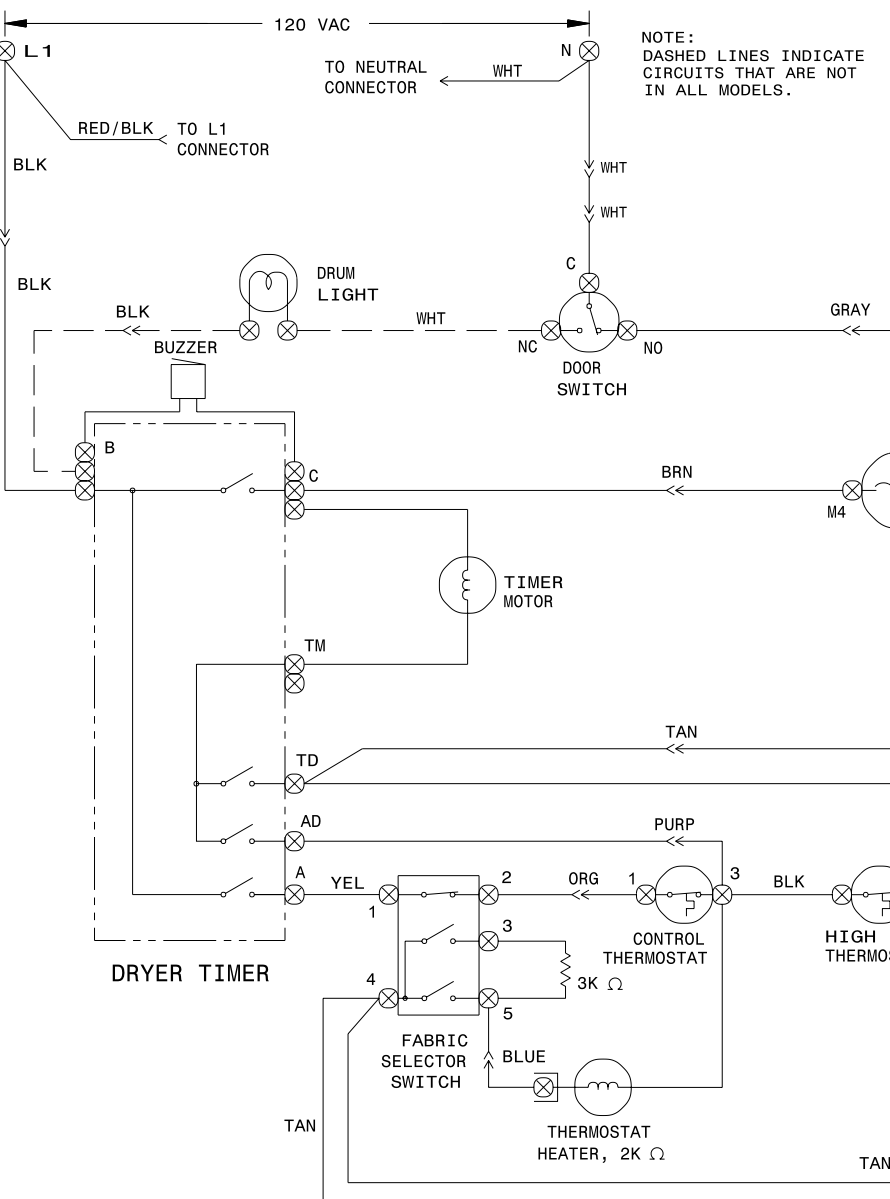
- ⊙ PLUG-IN TIMER
- ⊗ QUICK DISCONNECT TERMINAL
- ⊕ CONNECTION
- ⊖ NO CONNECTION
- ⊙ MOTOR SWITCH
- ⊖ SPlice
- ⊖ MOTOR PROTECTOR
- ⊖ CHASSIS (CABINET) GROUND
- ⊖ SCREW TERMINAL
- ⊖ HARNESS CONNECTOR TERMINAL
- ⊖ INSULATED TERMINAL

TEMPERATURE SWITCH CIRCUIT

WASH/RINSE	F-H	FF-H	FF-C
HOT/COLD	X	0	0
WARM/WARM (OPT)	0	X	X
COLD/COLD	0	0	X
WARM/COLD	X	0	X

0=OPEN
X=CLOSED

- NOTES:**
- ALL WIRING MUST CONFORM TO LOCAL ELECTRICAL CODES.
 - CONNECT DRYER TO 15 AMP INDIVIDUAL BRANCH CIRCUIT.
 - DRYER TIMER SHOWN IN OFF POSITION DOOR SWITCH CLOSED, MOTOR AT REST, AN THERMOSTAT CLOSED. AND FABRIC SELECTOR SWITCH AT HIGH HEAT.
- WASHER TIMER SHOWN IN ON POSITION TEMPERATURE SELECTOR SWITCH AT HOT WASH/COLD RINSE, AND PRESSURE SWITCH FULL.



CYCLES

CIRCUIT	AUTO DRY			OFF	TIMED DRY (MIN)							OFF
	31.7	15	0		105.3	90	75	60	45	30	15	
TIMER TM-AD	[Bar chart showing contact closure patterns]											
TIMER TM-TD	[Bar chart showing contact closure patterns]											
HEATER B-A	[Bar chart showing contact closure patterns]											
MOTOR B-C	[Bar chart showing contact closure patterns]											

BAR CHART ABOVE REPRESENTS ONE COMPLETE REVOLUTION OF TIMER SHAFT. SHADED PORTION OF BAR CHART INDICATES THE PROPORTIONAL TIMES THAT INTERNAL TIMER CONTACTS ARE CLOSED.

FABRIC SELECTOR SWITCH

POSITION	1-2	3-4	4-5
NO HEAT	0	0	0
LOW HEAT	X	0	X
MEDIUM HEAT	X	X	0
HIGH HEAT	X	0	0

X= CLOSED O= OPEN

G