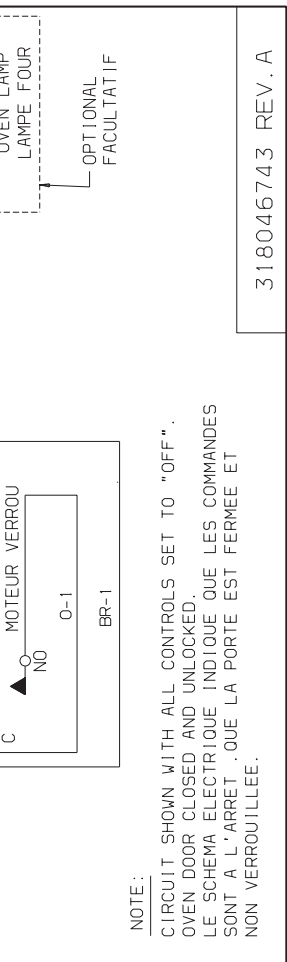


WIRE GAGE / FIL CALIBRE	TEMP °C	UL STYLE	UL STYLE UL
10	18	125	3173
9	16	125	3173
8	18	200	3122
7	18	200	3304
6	12	150	3321
5	16	200	3122
4	10	150	3321
3	14	150	3321
2	16	150	3321
1	18	150	3321

WARNING / AVERTISSEMENT	COLOR CODE / CODE COULEUR	
DISCONNECT POWER BEFORE SERVICING UNIT. COUPER LE COURANT AVANT D'EFFECTUER LA REPARATION.	BK BLACK/NOIR	P PINK/ROSE
	BL BLUE/BLEU	PR PURPLE/POURPRE
	BR BROWN/BRUN	R RED/ROUGE
	C COPPER/CUIVRE	T TAN/TAN
	GY GREEN/VERT	V VIOLET/VIOLET
	O ORANGE/ORANGE	W WHITE/BLANC
	BL/W BLUE/WHITE STRIPE/BLEU RAYES BLANC	Y YELLOW/JAUNE

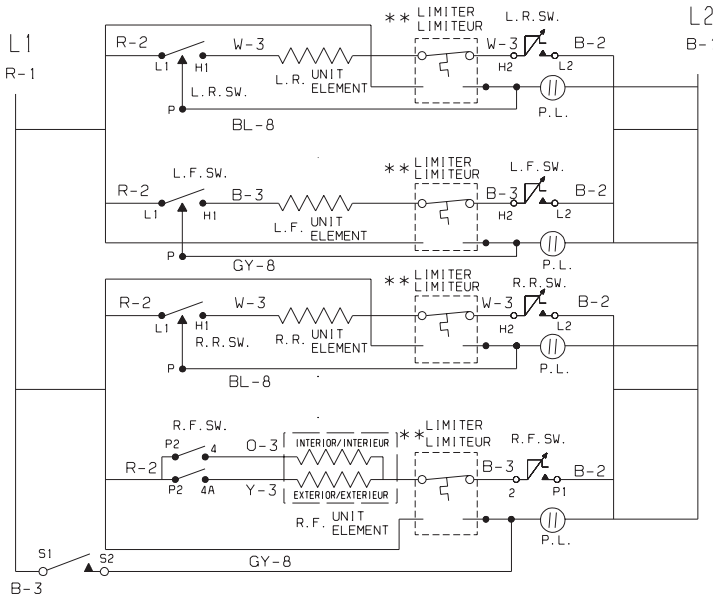
WIRE GAGE / FIL CALIBRE	TEMP °C	UL STYLE	UL STYLE UL
10	18	125	3173
9	16	125	3173
8	18	200	3122
7	18	200	3304
6	12	150	3321
5	16	200	3122
4	10	150	3321
3	14	150	3321
2	16	150	3321
1	18	150	3321



NOTE:  
 CIRCUIT SHOWN WITH ALL CONTROLS SET TO "OFF".  
 OVEN DOOR CLOSED AND UNLOCKED.  
 LE SCHEMA ELECTRIQUE INDIQUE QUE LES COMMANDES  
 SONT A L'ARRET . QUE LA PORTE EST FERMEE ET  
 NON VERROUILLÉE.

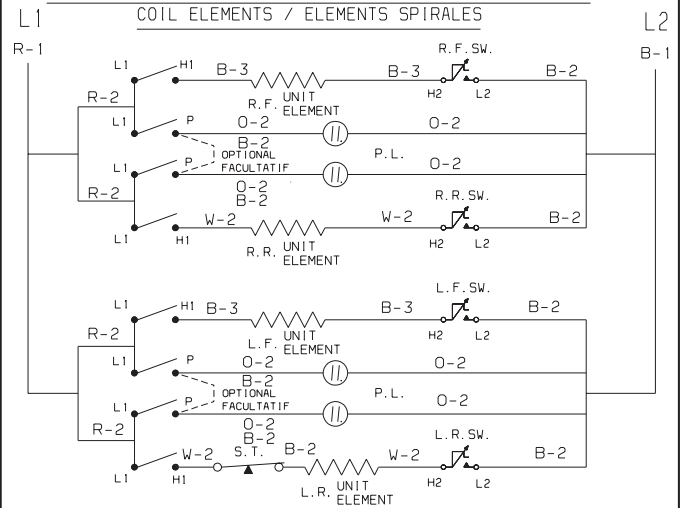
SURFACE ELEMENTS CIRCUIT / CIRCUIT-ELEMENTS-SURFACE

SMOOTH TOP WITH ONE DOUBLE ELEMENT / VITRIFIEE AVEC UN DOUBLE ELEMENT



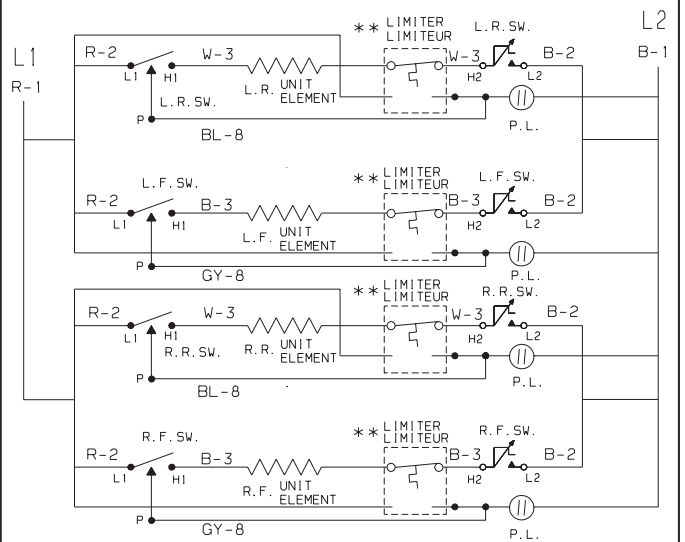
SURFACE ELEMENTS CIRCUIT / CIRCUIT-ELEMENTS SURFACE

COIL ELEMENTS / ELEMENTS SPIRALES



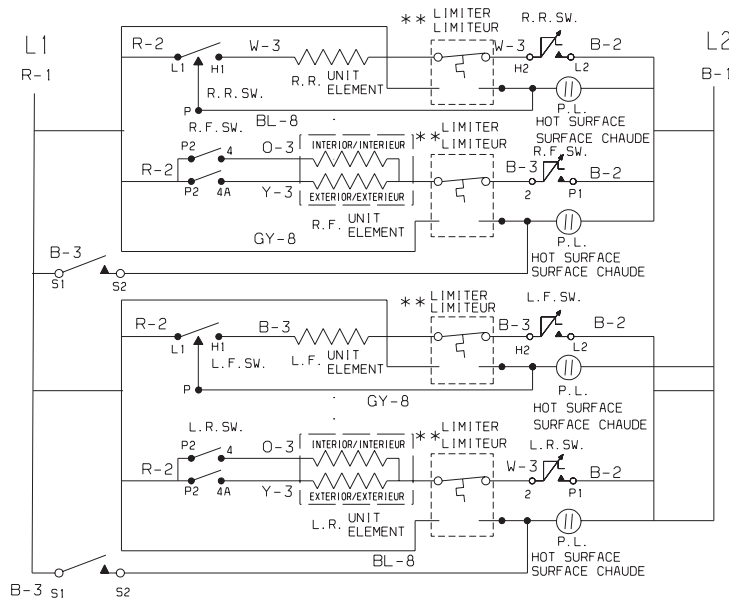
SURFACE ELEMENTS CIRCUIT / CIRCUIT-ELEMENTS-SURFACE

SMOOTH TOP / VITRIFIEE

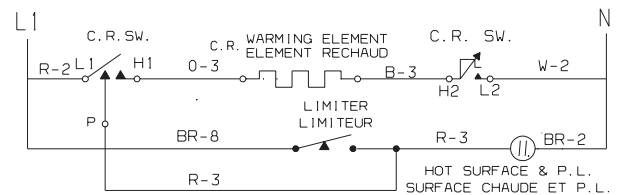


SURFACE ELEMENTS CIRCUIT / CIRCUIT-ELEMENTS-SURFACE

SMOOTH TOP WITH TWO DOUBLE ELEMENT / VITRIFIEE AVEC DEUX DOUBLE ELEMENT

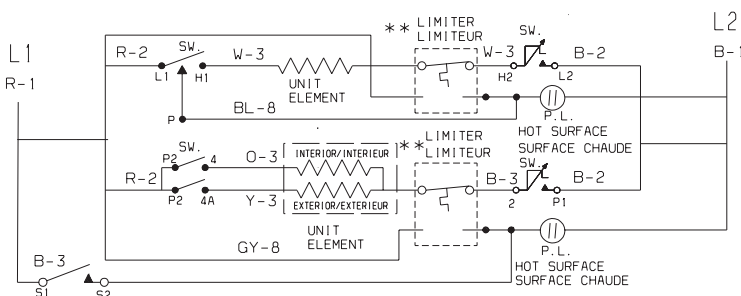


ELEMENTS WARMER ZONE CIRCUIT / CIRCUIT-ELEMENTS-ZONE RECHAUD

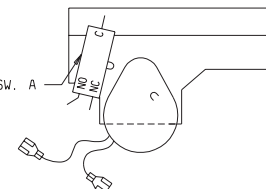


SURFACE ELEMENTS CIRCUIT / CIRCUIT-ELEMENTS-SURFACE

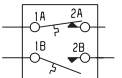
SMOOTH TOP WITH TWO DOUBLE ELEMENT (FRONT) / VITRIFIEE AVEC DEUX DOUBLE ELEMENT (AVANT)



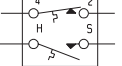
SW. A  
MOTOR LATCH SW.  
INTER. MOTEUR VERROU



\*\* LIMITER/LIMITEUR  
CERAMASPEED/EIKA



\*\* LIMITER/LIMITEUR  
E. G. O. / A. K. O.



CAUTION:  
ATTENTION:

DISCONNECT CURRENT BEFORE REMOVING REAR COVER.  
COUPER LE COURANT AVANT D'ENLEVER LE PANNEAU ARRIERE.

REV : A