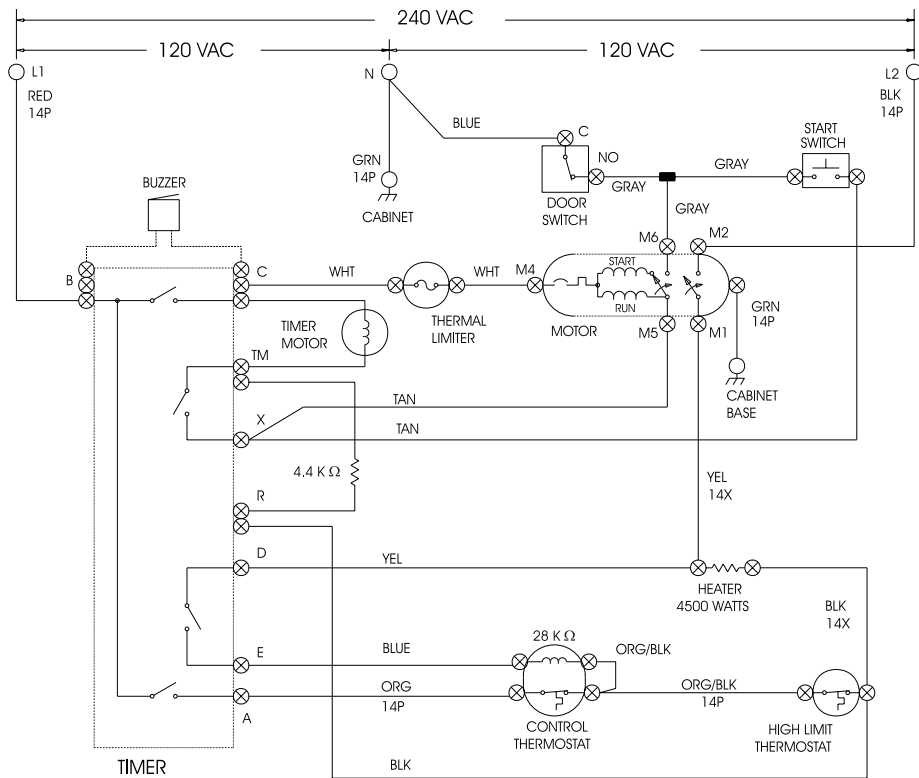
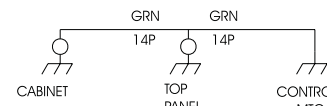


CAUTION: DISCONNECT ELECTRIC CURRENT BEFORE SERVICING



NOTE:
DASHED LINES INDICATE
CIRCUITS THAT ARE NOT
IN ALL MODELS.



WIRE SPECIFICATIONS

CODE	WIRE GAUGE A.W.G	INSULATION MATERIAL
18P	18	105°C PVC (POLYVINYLCHLORIDE)
14P	14	
14X	14	125°C X-LINK

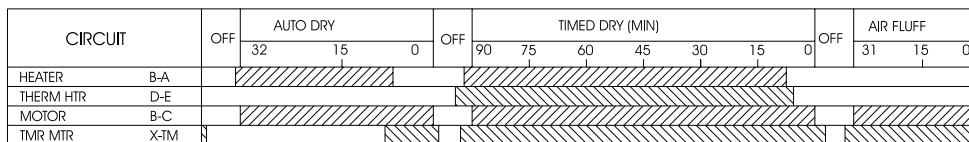
NOTE: ALL UNSPECIFIED WIRE CODES
ARE 18P.

WIRING CODES

	PLUG-IN TIMER
	QUICK DISCONNECT TERMINAL
	CONNECTION
	NO CONNECTION
	MOTOR SWITCH
	SPLICE
	MOTOR PROTECTOR
	CHASSIS (CABINET) GROUND
	SCREW TERMINAL
	HARNES CONNECTOR TERMINAL
	INSULATED TERMINAL

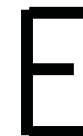
- NOTES:
1. ALL WIRING MUST CONFORM TO LOCAL ELECTRICAL CODES.
 2. CONNECT DRYER TO A 30 AMPERE INDIVIDUAL BRANCH CIRCUIT.
 3. TIMER SHOWN IN OFF POSITION, DOOR SWITCH CLOSED, MOTOR AT REST, & THERMOSTAT CLOSED.

CYCLES



BAR CHART TO THE LEFT REPRESENTS ONE COMPLETE REVOLUTION OF TIMER SHAFT.

SHADED PORTION OF BAR CHART INDICATES THE PROPORTIONAL TIMES THAT INTERNAL TIMER CONTACTS ARE CLOSED.



WIRING DIAGRAM
P/N 131847300