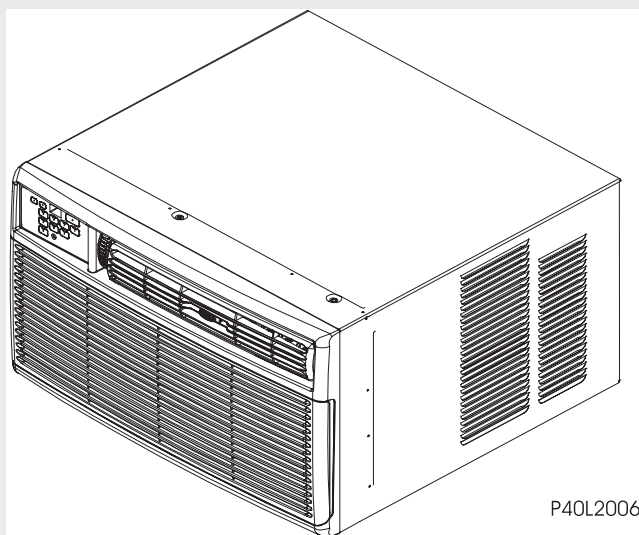


Frigidaire

Factory Parts Catalog



P40L2006

Product No.	FAS296N2A2
Series	heavy duty
Color	N/A
Volts	230/208
BTU-Cooling	28500 BTU
Wiring Diagram	5995438024
Owner's Guide	309000855
Market	North America

 **Electrolux**

Electrolux Major Appliances
North & Latin America
P.O. BOX 212378
AUGUSTA, GA 30917

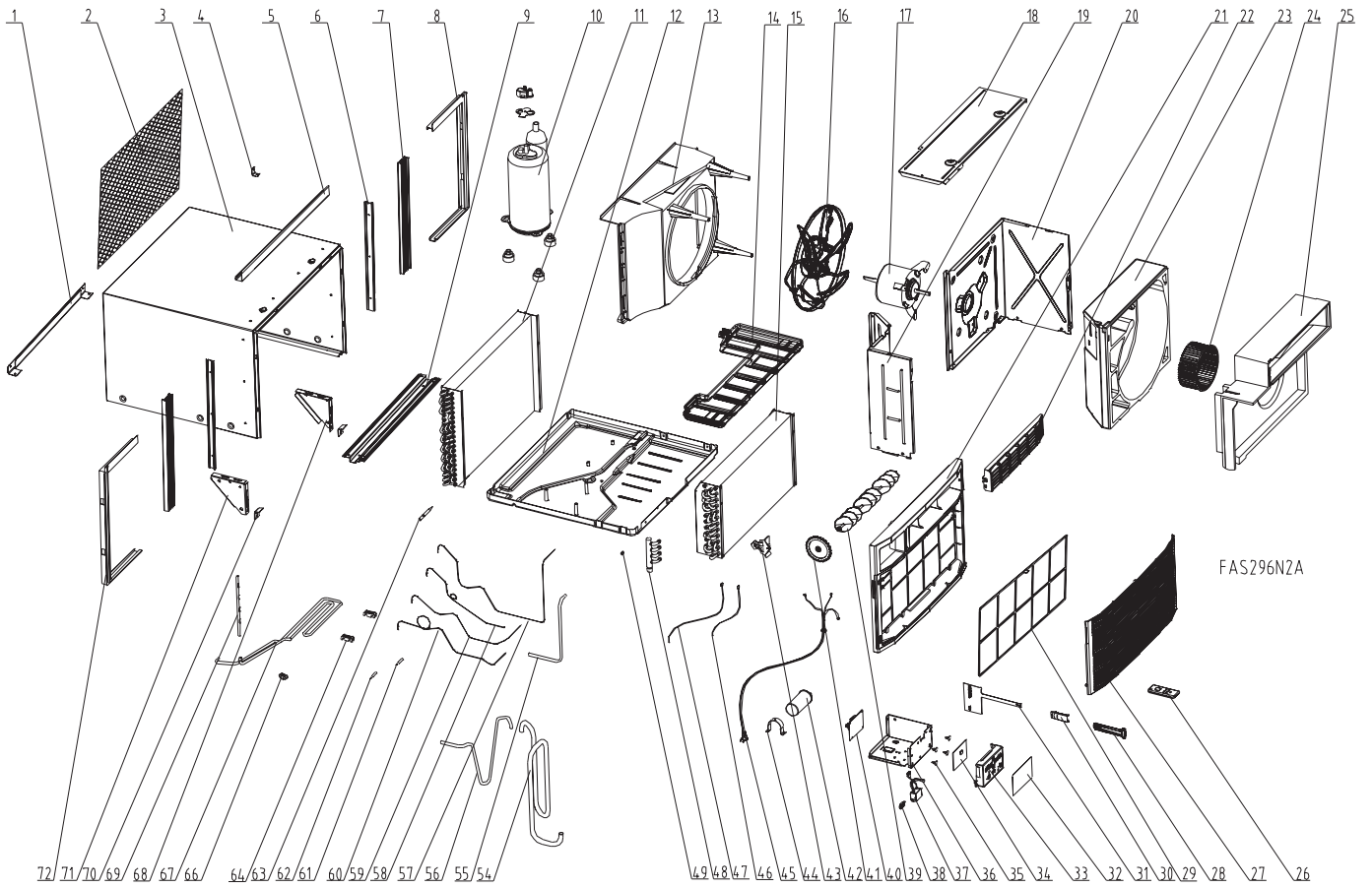
Publication No.
5995438024
05/05/31
(EN/SERVICE/WC)
099

**ROOM AIR
CONDITIONER**

**Model No.
FAS296N2**

Copyright © 2005 Electrolux Home Products, Inc.
All rights reserved.

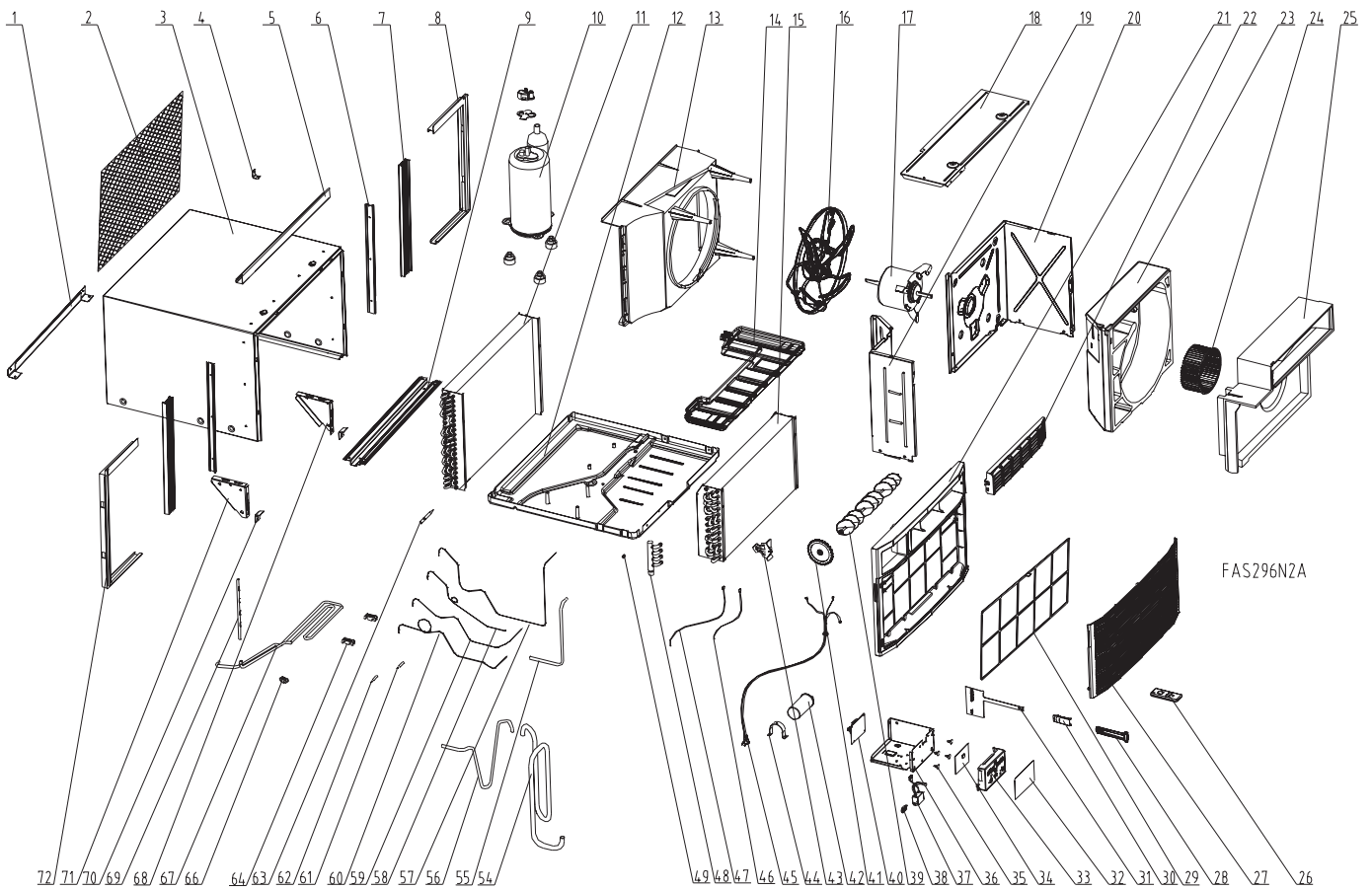
RECOMMENDED SPARE PARTS



RECOMMENDED SPARE PARTS

POS. NO	PART NO.	DESCRIPTION
1	5304414097	Rail, cabinet bottom, rear
2	5304408741	Grille, rear panel, aluminum
3	309623906	Cabinet, wrapper/sleeve
4	5303211056	Bracket, sash lock
5	5304414116	Rail, cabinet top, front
6	5304414933	Retainer, shutter mount, cabinet side
7	309645602	Shutter, accordion panel, RH/LH, window closure
8	5304414929	Frame, shutter, gray, RH, extension
9	5304416310	Rail, cabinet bottom, front
10 #	309904101	Compressor Assembly, w/electricals, & mtg grommets
11 #	5303306719	Condenser
12	309632916	Base, compressor mtg, with studs
13	309623201	Shroud, cond fan motor
14	309623501	Tray, evap drip
15 #	309642001	Evaporator
16 #	5304422465	Fan Blade, with clamp
17 #	309630614	Motor, fan, 1 Speed
18	309630302	Cover, blower wheel, top
19	309623602	Bulkhead, control system
20	309623401	Bulkhead, air system
21	309900101	Frame, cabinet front
22	309900301	Louver, horizontal
23	309630102	Housing, blower scroll
24 #	309633001	Blower Wheel, plastic, with clamp
25	309630203	Plate, scroll cover
26 #	309902201	Remote Control, transmitter, with lcd
27	309900201	Panel, front grille
28	309900601	Handle, vent opener
29	309639001	Filter, micro-biologic, framed
30	309902801	Detent, vent handle
31	309321402	Door, vent, with actuator
32	309901704	Overlay, control display
33	309900501	Enclosure, input pcb, control panel
34 #	309901601	PC Board, input/display
35	5304413781	Hardware, PCB support
36	309630404	Control Box
37 #	309900701	Ionizer
38	309111201	Grommet, wire protector
39	309904601	Louver, vertical
40 #	309901501	PC Board, power, 230 V, variable speed
41	309900401	Wheel, louver adjuster
42 #	5304438658	Capacitor, 450 VAC, 45+7.5 mfd
43	5308017149	Holder, thermistor clip, 3/8 inch
44	5303303077	Strap, capacitor mtg.
45 #	309343136	Power Cord, LCDI, 12 AWG, 230 V, with test/reset
46 #	309201602	Sensor, thermistor, ambient temp
47 #	309201603	Sensor, thermistor, evap defrost
48 #	309301502	Manifold Assembly, suction
49	5303302254	Nut, expansion type
54 #	309902301	Tube, suction, copper
55 #	309902401	Tube, connector, copper, capillary 2

RECOMMENDED SPARE PARTS



RECOMMENDED SPARE PARTS

POS. NO	PART NO.	DESCRIPTION
56 #	309903001	Tube, discharge, copper
57 #	309905101	Tube, capillary 1, copper
58 #	309905201	Tube, capillary 2, copper
59 #	309905301	Tube, capillary 3, copper
60 #	309905401	Tube, capillary 4, copper
61 #	309111005	Fitting, reducer .375 OD, .114/.117 ID, copper tube
62 #	309111002	Fitting, reducer .313 OD, .114/.117 ID, copper tube
63 #	5303290357	Strainer
64	309903101	Grommet, cooling tube
66	309904201	Seal, rubber, w/double holes
67 #	309903201	Tube, super cooling
68	5304414105	Bracket, cab support, RH
69 #	5304438657	Tube, process, copper
70	3001815	Support, angle bracket, window sill mt.
71	5304414106	Bracket, cab support, LH
72	5304414928	Frame, shutter, gray, LH, extension

WIRING DIAGRAM

