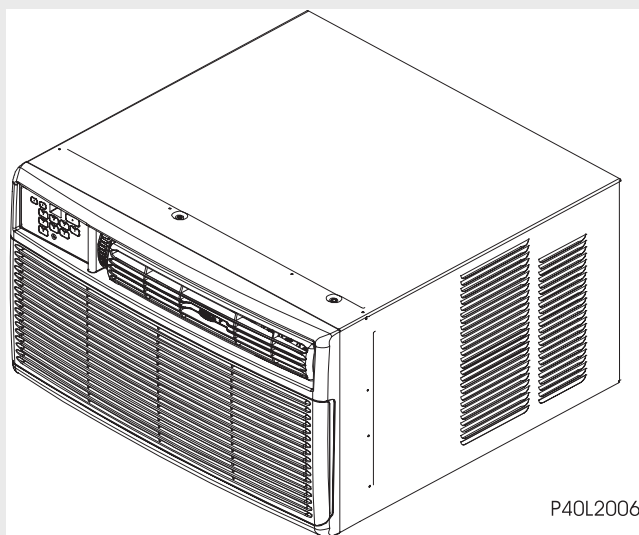


# Frigidaire

## Factory Parts Catalog



P40L2006

Product No.	FAS184N2A	FAS184N2A2
Series	heavy duty	heavy duty
Color	N/A	N/A
Volts	230/208	230/208
BTU-Cooling	18000 BTU	18000 BTU
Wiring Diagram	5995437919	5995437919
Owner's Guide	309000855	309000855
Market	North America	North America

# Electrolux

Electrolux Major Appliances  
North & Latin America  
P.O. BOX 212378  
AUGUSTA, GA 30917

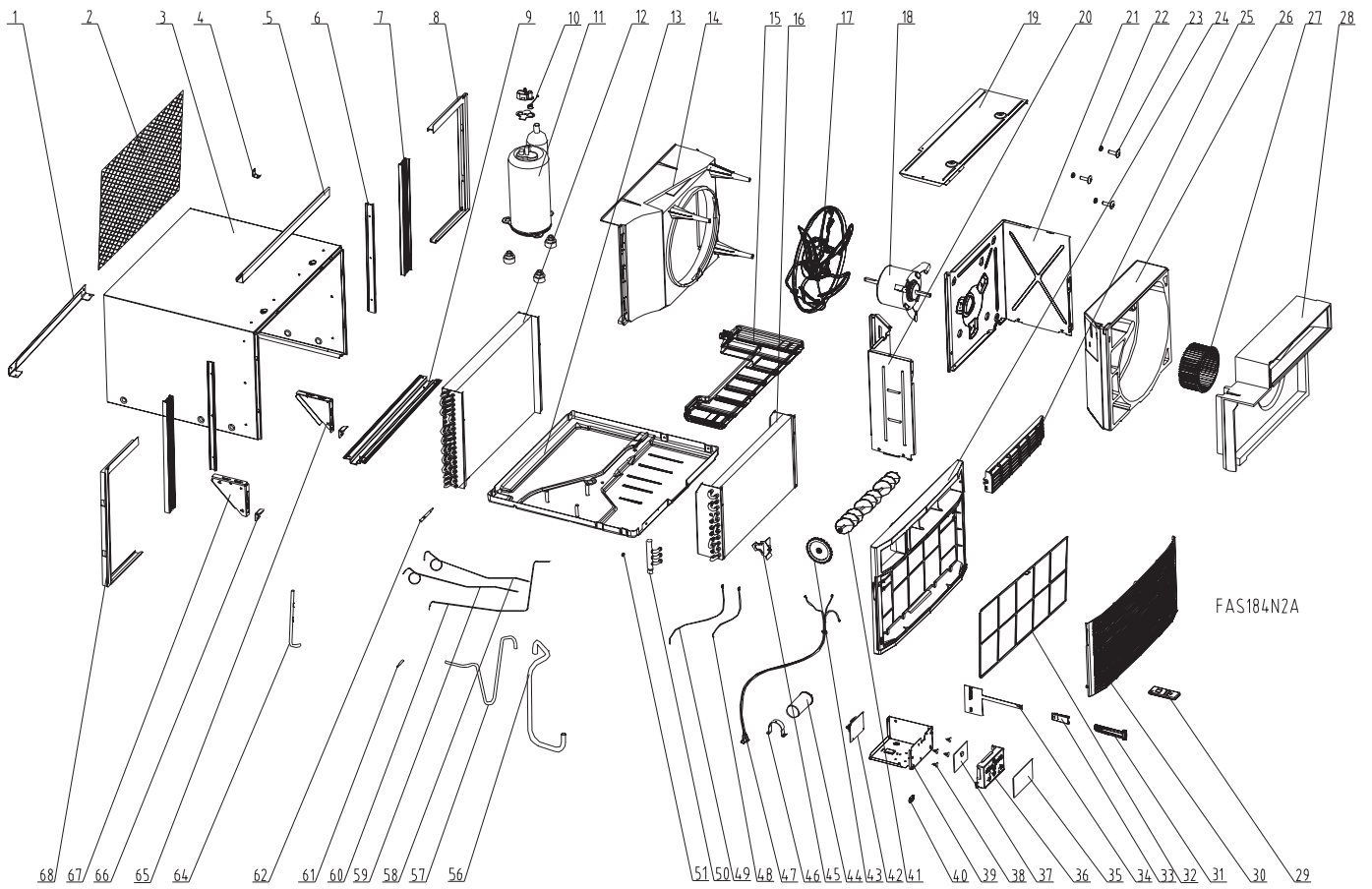
Publication No.  
**5995437919**  
05/05/27  
(EN/SERVICE/WC)  
099

## ROOM AIR CONDITIONER

Model No.  
FAS184N2

Copyright © 2005 Electrolux Home Products, Inc.  
All rights reserved.

**RECOMMENDED SPARE PARTS**

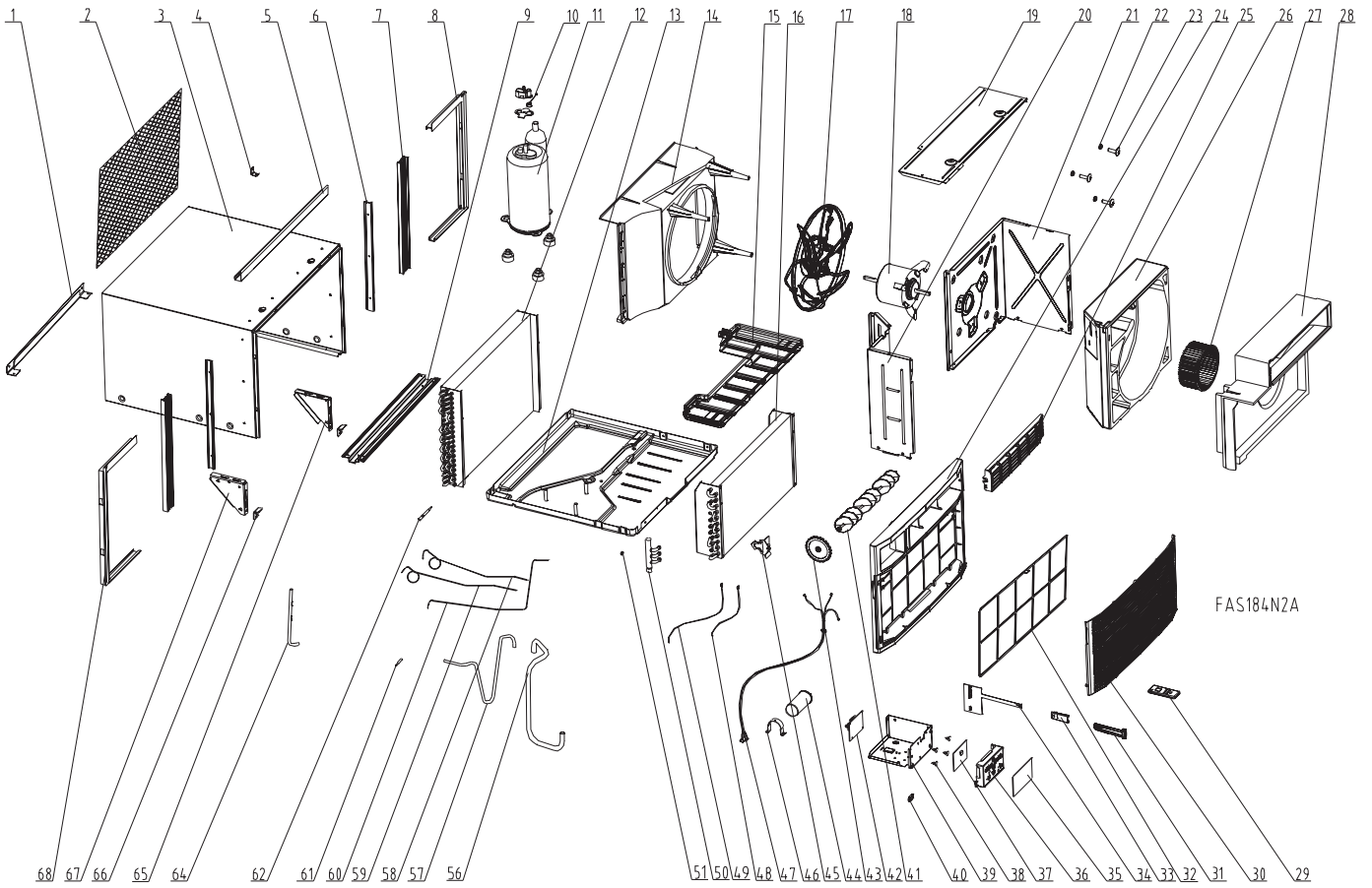


**RECOMMENDED SPARE PARTS**

*Model Index:* A FAS184N2 (FAS184N2A)  
 B FAS184N2 (FAS184N2A2)

POS. NO	PART NO.		DESCRIPTION
1	5304414097	A B	Rail, cabinet bottom, rear
2	5304408741	A B	Grille, rear panel, aluminum
3	309623906	A B	Cabinet, wrapper/sleeve
4	5303211056	A B	Bracket, sash lock
5	5304414116	A B	Rail, cabinet top, front
6	5304414933	A B	Retainer, shutter mount, cabinet side
7	309645602	A B	Shutter, accordion panel, RH/LH, window closure
8	5304414929	A B	Frame, shutter, gray, RH, extension
9	5304416310	A B	Rail, cabinet bottom, front
10 #	5304414111	A B	Overload Protector
11 #	309603113	A B	Compressor
12 #	5303208581	A B	Condenser
13	309632910	A B	Base, compressor mtg., with studs
14	309623201	A B	Shroud, cond fan motor
15	309623501	A B	Tray, evap drip
16 #	309634103	A B	Evaporator
17 #	5303311048	A B	Fan Blade, with clamp
18 #	309630613	A B	Motor, fan, 1 Speed
19	309630302	A B	Cover, blower wheel, top
20	309623602	A B	Bulkhead, control system
21	309623403	A B	Bulkhead, air system
22	5300105402	A B	Grommet, motor, (3)
23	5303317224	A B	Screw, indt hex head, 10-16, (3)
24	309900101	A B	Frame, cabinet front
25	309900301	A B	Louver, horizontal
26	309630101	A B	Housing, blower scroll
27 #	309633001	A B	Blower Wheel, plastic, with clamp
28	309630203	A B	Plate, scroll cover
29 #	309902202	A B	Remote Control, transmitter
30	309900201	A B	Panel, front grille
31	309900601	A B	Handle, vent opener
32	309639001	A B	Filter, micro-biologic, framed
33	309902801	A B	Detent, vent handle
34	309321402	A B	Door, vent, with actuator
35	309901702	A B	Overlay, control display
36	309900501	A B	Enclosure, input pcb, control panel
37 #	309901601	A B	PC Board, input/display
38	5304413781	A B	Hardware, PCB support
39	309630404	A B	Control Box
40	309111201	A B	Grommet, wire protector
41	309904601	A B	Louver, vertical
42 #	309901501	A B	PC Board, power, 230 V, variable speed
43	309900401	A B	Wheel, louver adjuster
44 #	5304427210	A B	Capacitor, 440 VAC, 25+6 microfarad
45	5304414108	A B	Holder, thermistor clip, 5/16"
46	5303303077	A B	Strap, capacitor mtg.
47 #	309343112	A -	Power Cord, electric, 16 AWG, 230 V, type C
47 #	309343134	- B	Power Cord, ELECT W/LCIDI, 16 AWG, 230 V, type C
48 #	309201602	A B	Sensor, thermistor, ambient temp

RECOMMENDED SPARE PARTS



---

**RECOMMENDED SPARE PARTS**


---

*Model Index:* A FAS184N2 (FAS184N2A)  
 B FAS184N2 (FAS184N2A2)

POS. NO	PART NO.		DESCRIPTION
49 #	309201603	A B	Sensor, thermistor, evap defrost
50 #	309330502	A B	Manifold Assembly, with rings
51	5303302254	A B	Nut, expansion type
56 #	309371801	A B	Tube, suction, copper
57 #	309371701	A B	Tube, discharge, copper
58 #	309374301	A B	Tube, capillary, copper, top
59 #	309374401	A B	Tube, capillary, copper, middle
60 #	309374501	A B	Tube, capillary, copper, bottom
61 #	309111001	A B	Fitting, reducer, .101/.104 ID, copper tube
62 #	5303290357	A B	Strainer
64 #	5304417722	A B	Tube, process, copper, cond. outlet
65	5304414105	A B	Bracket, cab support, RH
66	3001815	A B	Support, angle bracket, window sill mt.
67	5304414106	A B	Bracket, cab support, LH
68	5304414928	A B	Frame, shutter, gray, LH, extension

### WIRING DIAGRAM

