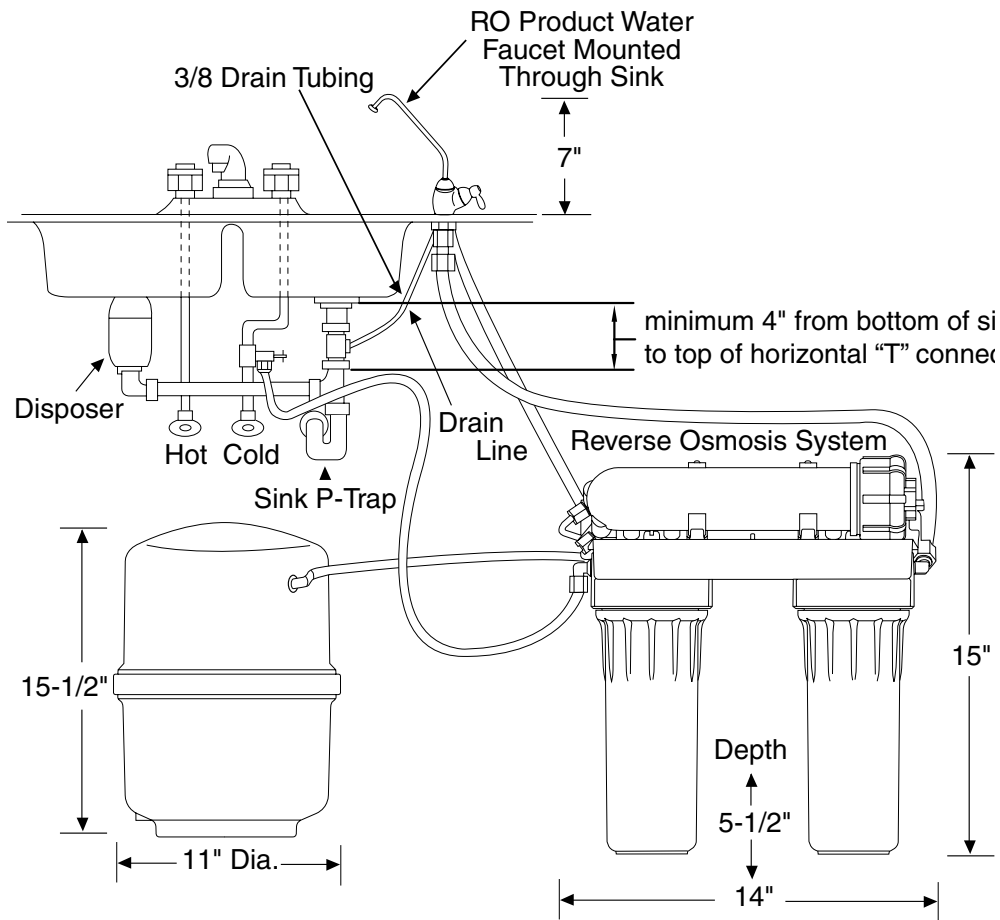




GE Appliances

GXRM10GBL – GE SmartWater™ Reverse Osmosis Filtration System



Installation and Parts Information

Note: R.O. System can be installed up to 30 feet from point-of-use/faucet.

Note: Can be installed under counter (as shown), in basement, or other convenient location. Before installing, see installation instructions packed with product for complete details.

Replacement Membranes, Pre- and Post-Filters

Call SmartWater Services, toll-free, 800.952.5039 for convenient ordering.

Caution: Do not use with water that is microbiologically unsafe or of unknown quality, without adequate disinfection before or after the system. Systems certified for cyst reduction may be used on disinfected water that may contain filterable cysts. This reverse osmosis unit contains a replaceable membrane cartridge treatment component critical for effective removal of Total Dissolved Solids. The water should be tested periodically to verify that the system is performing satisfactorily.



GE Reverse Osmosis Model GXRM10G Series are tested and certified to ANSI/NSF Standard 58 for TDS and cyst reduction.

See Performance Data Sheet for details.

Independently Tested

This product has been independently tested by NSF and WQA, two of the most highly recognized testing institutions in the water treatment industry. Product performance testing details by each test facility are specified on the Performance Data Sheet (inside the product box).

Specification Created 2/06

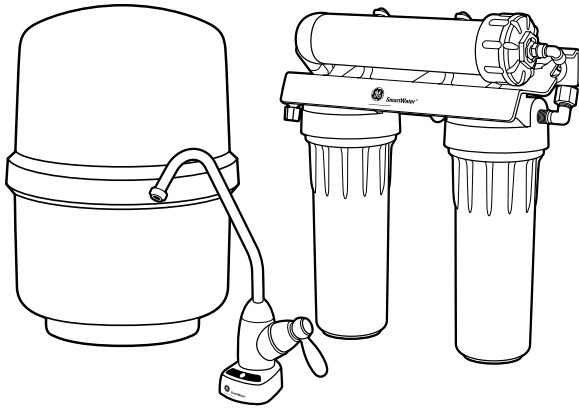
380108

For answers to your Monogram,® GE Profile™ or GE® appliance questions, visit our website at GEAppliances.com or call GE Answer Center® service, 800.626.2000.



GE Appliances

GXRM10GBL – GE SmartWater™ Reverse Osmosis Filtration System



Features and Benefits

- Premium filtration process
- Filter reminder light
- Large 10-gallon capacity
- Long-reach chrome faucet
- Faucet, filters, membrane, storage tank and full installation kit included
- 3-gallon storage tank
- Model GXRM10GBL