

ELECTRIC BUILT-IN COOKTOPS

30" MODELS: KECS100 (KECS-1040), ESU-300
KECX100

36" MODELS: KECG260 (KECG-2640), ESUG-360
KECX260
KECS160
KECX160 ESU-360

INSTALLATION INSTRUCTIONS

INSTALLER: FINAL CHECK LIST

IMPORTANT:

**LEAVE THESE INSTRUCTIONS FOR USE BY
THE LOCAL ELECTRICAL INSPECTOR**

PLACEMENT OF COOKTOP

- ☐ 1. Specified clearances maintained to adjacent surfaces.
- ☐ 2. Burner box securely anchored to cabinet top.

ELECTRICAL

- ☐ 1. Unit properly grounded.
- ☐ 2. Check that unit is connected to proper volt, amp and breaker ratings per Electrical Specifications given in this booklet.
- ☐ 3. All connections made in accordance with local and/or National Electrical Code.

OPERATIONAL

- ☐ 1. Knobs installed on switches.
- ☐ 2. Top element indicator light comes on when any top element is turned on.
- ☐ 3. Grill/Griddle Models — Indicator light comes on when grill/griddle element is turned on.
- ☐ 4. Grill/Griddle Models — Pan/element assembly is properly assembled as shown in Section C - Figure 3.
- ☐ 5. Grill/Griddle Models — Place cover over grill or griddle.

Unless instructed to leave for owner, remove all tags, labels, and internal packing material.

THANK YOU INSTALLER:

1. Complete Installation Checklist.
2. Leave all literature for customer.
3. Notify dealer that installation is completed.

FOR DETAILED INSTRUCTIONS, FOLLOW METHODS DESCRIBED IN THIS FOLDER.

IMPORTANT: Read completely before installing to save time, work, assure proper performance, and owner's warranty protection.

ELECTRICAL SPECIFICATIONS

KECS100 KECX100 (KECS-1040), ESU-300		KECG260 KECX260 (KECG-2640), ESUG-360	
KECS160 KECX160	ESU-360		
Voltage and Frequency	240 volts or 208 volts, 60 hertz	Voltage and Frequency	240 volts or 208 volts, 60 hertz
Operating Load	30 amperes	Operating Load	37.5 amperes max.
Maximum Protective Device Size	40 amperes	Maximum Protective Device Size	50 amperes
Minimum Circuit Size	40 amperes	Minimum Circuit Size	50 amperes

WARNING: ELECTRICAL AND GROUNDING CONNECTIONS MUST COMPLY WITH APPLICABLE PORTIONS OF THE NATIONAL ELECTRICAL CODE AND/OR OTHER LOCAL ELECTRICAL CODES.

The bare copper wire in factory installed conduit is the unit ground wire, not a neutral conductor.

INSTALLATION INSTRUCTIONS

All work should be done by a qualified electrician who is familiar with the National Electrical Code and/or Local Codes.

WARNING: DISCONNECT ELECTRICAL POWER SUPPLY AND PLACE A TAG AT THE DISCONNECT SWITCH INDICATING THAT YOU ARE WORKING ON THE CIRCUIT.

FOR REPLACEMENT COOKTOP INSTALLATION INSTRUCTIONS GO TO SECTION E OF THIS BOOKLET

NEW INSTALLATION

THE FOLLOWING INSTRUCTIONS ARE FOR NEW INSTALLATIONS ONLY.

Before installing unit be sure that the electrical supply meets the electrical specifications given in this booklet for your model.

SECTION A — ELECTRICAL SUPPLY

It will be necessary to locate a junction box, not provided, below the countertop for the connection of the 4-foot length of 1/2" flexible conduit supplied with the cooktop. Figure 1 shows the location of the conduit for the various models.

All burners boxes are 3 inches deep. An additional 4 inches at the rear of the burner box is needed for the electrical connections. See side view of Figure 1.

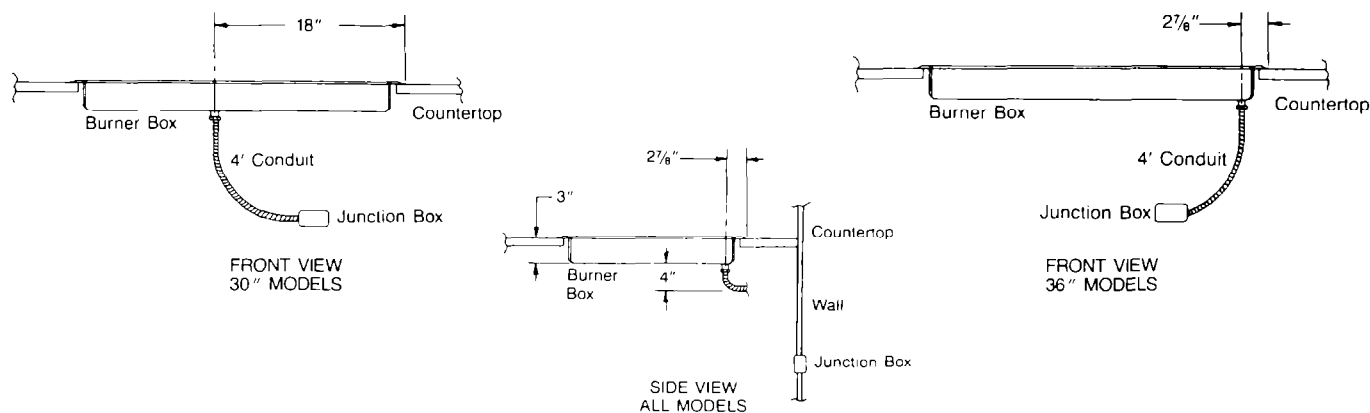


Figure 1

SECTION B — CABINET CONSTRUCTION

All surface units are designed for installation in a base cabinet with a countertop depth of 24". For information on top cabinet location see notes below.

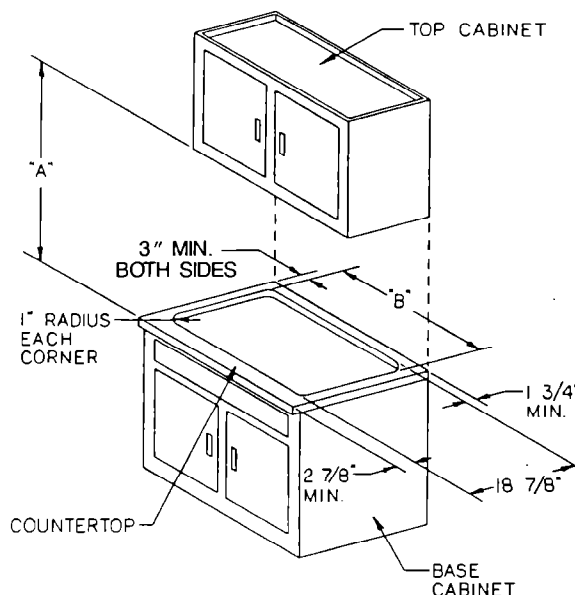
Countertop cutout dimensions are given in Figure 2 and the chart below for the various cooktop models. When the illustration is followed the required clearances from the front edge of countertop and the nearest vertical and rear walls will be obtained.

NOTE: To eliminate the risk of burns or fire by reaching over the heated surface units, cabinet storage space located above the surface unit should be avoided. If cabinet storage is to be provided, the risk can be reduced by installing a range hood that projects horizontally a minimum of 5 inches beyond the bottom of the cabinets.

NOTE: "A" = 30" min. clearance between the top of the cooking surface and the bottom of an unprotected wood or metal cabinet.

"A" = 24" min. when bottom of wood or metal cabinet is protected by not less than 1/4" flame retardant millboard covered with not less than No. 28 MSG sheet steel, 0.024" aluminum, 0.015" stainless steel or 0.020" copper.

NOTE: Sides of cooktop must be spaced a minimum of one inch from any vertical surface.

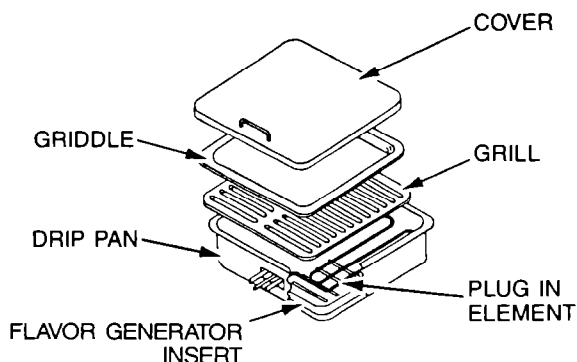


CUTOUT DIMENSIONS FOR NEW
INSTALLATION INFORMATION

	30" MODELS	36" MODELS
"B" DIMENSION	27"	33 1/4"

Figure 2

SECTION C — UNPACK UNIT



KECG260, KECX260, ESUG-360
Figure 3

Remove all packing material from unit and any accessories.

Grill/Griddle Models - Assemble grill/griddle as shown in Figure 3. Set aside.

Remove both front electric elements by raising slightly and pulling directly away from receptacle. Remove the two front drip bowls. Set aside.

When raising or lowering the cooktop itself use the front two element openings.

SECTION D — INSTALLING UNIT

Place cooktop in countertop cutout. Center and align unit in opening making sure that required clearances are maintained.

Determine which of the following two mounting methods, shown below in Figures A and B is to be used. When using either method be sure to use the outermost applicable mounting hole.

NOTE: With some installations, i.e. replacements, it is possible that both methods may be employed.

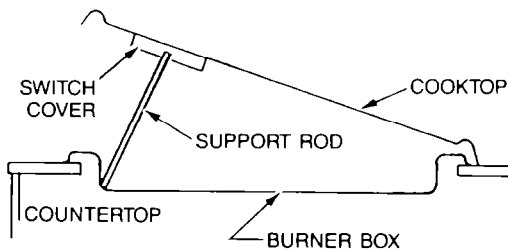
Hardware for both methods is provided and consists of 4 - wood screws and 4 - bolt and clamp assemblies.

WOOD SCREW AND WASHER ASSEMBLY

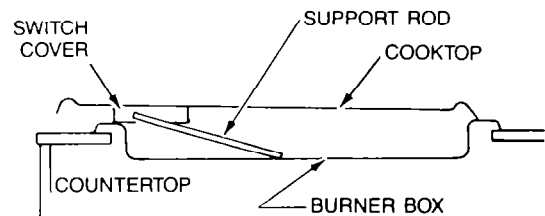
When permissible the burner box may be fastened directly to the countertop using a wood screw and washer assembly. Use the cup washer from the bolt and clamp assembly and place wood screw provided through washer.

1. Each unit has double action hinges which allow the front and back mounting holes to be exposed individually. After centering and aligning unit in cutout, lift cooktop by placing a hand in each front element opening and engage support rod. See Position 1. Secure burner box using wood screw and washer assembly in front two outermost mounting holes. As shown in Figure A.

IMPORTANT NOTE: Due to flange design hand tighten only until outer lip is snug to countertop. Overtightening may stress flange and cause crazing and chipping of porcelain.



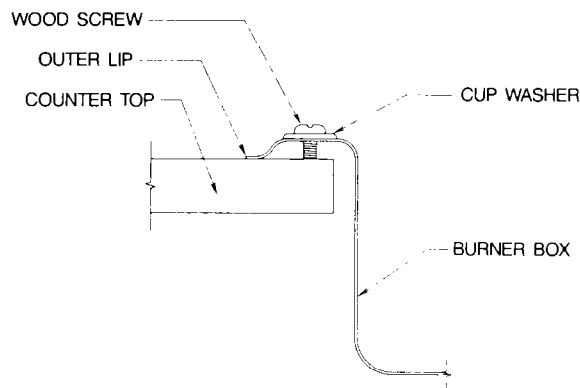
Position 1



Position 2

2. To expose back mounting holes, lift cooktop slightly, disengage support rod and pull cooktop forward, without lowering it, until hinges lock. Lower cooktop until it rests on countertop. See Position 2. Secure burner box using back two outermost mounting holes.
3. After fastening lift cooktop slightly and push back. Lower cooktop into normal position.

CONTINUED ON PAGE 5



WOOD SCREW AND WASHER ASSEMBLY
Figure A

SECTION D - INSTALLATING UNIT (Cont.)

Using entire length of conduit, properly connect power supply leads from the unit to the junction box. DO NOT CUT CONDUIT.

WARNING: IMPROPER CONNECTION OF WIRES MAY DAMAGE COOKTOP. IF JOINING TO ALUMINUM HOUSE WIRING PURCHASE CONNECTIONS FOR JOINING COPPER TO ALUMINUM AND FOLLOW THE MANUFACTURER'S DIRECTIONS CLOSELY.

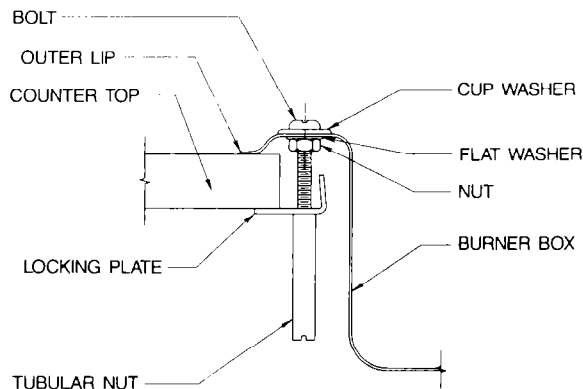
Replace front drip bowls and insert electric elements.

Grill/Griddle Models - Place drip pan and flavor generating insert in grill/griddle opening. Insert electric element. Place either grill or griddle over element, set other aside. Place cover over grill/griddle.

Refer to Installation Checklist on front cover of this booklet.

BOLT AND CLAMP ASSEMBLY

1. After centering and aligning unit in cutout lift cooktop by placing a hand in each front element opening and engage support rod. Place a cup washer over each bolt, grooved side away from bolt head, and put through the outermost mounting hole in each corner of the burner box.
2. Remove unit from countertop cutout. Lock each bolt and washer in place using a flat washer and hex nut on bottom side of burner box flange as shown in Figure B.
3. Put burner box with attached bolts in cabinet cutout. Center and align unit in opening making sure that required clearances are maintained.



BOLT AND CLAMP ASSEMBLY
Figure B

4. The following work must be done below the countertop. Slide locking plate over the lower end of the bolt. Hold in place with tubular nut, making sure that locking plate is positioned to obtain maximum area possible of countertop. See Figure B. Hand tighten tubular nut using standard slotted screwdriver.

IMPORTANT NOTE: Due to flange design hand tighten only until outerlip is snug to countertop. Overtightening may stress flange and cause crazing and chipping of porcelain.

Using entire length of conduit, properly connect power supply leads from the unit to the junction box. DO NOT CUT CONDUIT.

WARNING: IMPROPER CONNECTION OF WIRES MAY DAMAGE COOKTOP. IF JOINING TO ALUMINUM HOUSE WIRING PURCHASE CONNECTIONS FOR JOINING COPPER TO ALUMINUM AND FOLLOW THE MANUFACTURER'S DIRECTIONS CLOSELY.

Replace front drip bowls and insert electric elements.

Grill/Griddle Models - Place drip pan and flavor generating insert in grill/griddle opening. Insert electric element. Place either grill or griddle over element, set other aside. Place cover over grill/griddle.

Refer to Installation Checklist on front cover of this booklet.

SECTION E — REPLACEMENT INSTALLATIONS

THE FOLLOWING INSTRUCTIONS ARE FOR REPLACEMENT INSTALLATIONS ONLY.

Before installing unit be sure that the electrical supply meets the electrical specifications given in this booklet for your particular model.

ELECTRICAL SUPPLY

A 4-foot length of flexible conduit is provided with each cooktop for connection to the junction box. All burner boxes are 3 inches deep. An additional 4 inches at the rear of the burner box is needed for the electrical connections. See side view of Figure 1.

CABINET CONSTRUCTION

All surface units are designed for installation in a base cabinet with a countertop depth of 24 inches. For information on top cabinet location see notes below.

The minimum and maximum countertop cutout dimensions are given in Figure 4 and chart below according to model number. The side and rear wall clearances in the diagram are recommended clearances.

IMPORTANT NOTE: In order to comply with UL safety standards the front edge of the cooktop must be a minimum of 1½ inches from the front edge of the countertop (See Figure 5) and the sides of the cooktop must be a minimum of 1 inch away from any vertical sidewalls.

NOTE: To eliminate the risk of burns or fire by reaching over the heated surface units, cabinet storage space located above the surface unit should be avoided. If cabinet storage is to be provided, the risk can be reduced by installing a range hood that projects horizontally a minimum of 5 inches beyond the bottom of the cabinets.

NOTE: "A" = 30" min. clearance between the top of the cooking surface and the bottom of an unprotected wood or metal cabinet.

"A" = 24" min. when bottom of wood or metal cabinet is protected by not less than ¼" flame retardant millboard covered with not less than No. 28 MSG sheet steel, 0.024" aluminum, 0.015" stainless steel or 0.020" copper.

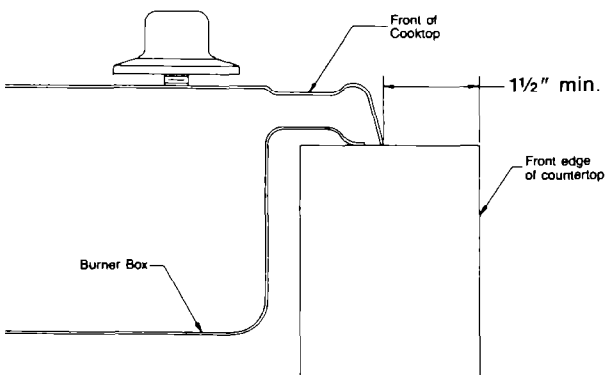
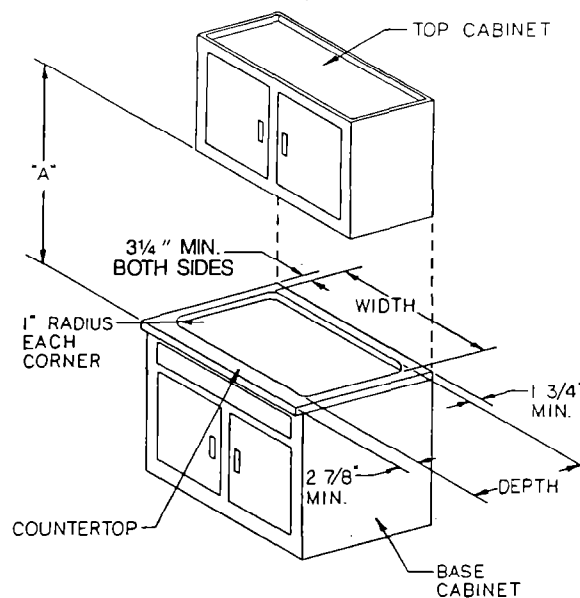


Figure 5



CUTOUT DIMENSIONS FOR REPLACEMENT
INSTALLATION INFORMATION

	30" MODELS		36" MODELS	
	Minimum	Maximum	Minimum	Maximum
Width	26½"	29⅝"	33"	34⅞"
Depth	18¾"	20⅝"	18¾"	20⅝"

Figure 4

UNPACK UNIT

Remove all packing material from unit and any accessories.

Grill/Griddle Models - Assemble grill/griddle as shown in Figure 3. Set aside.

Remove both front electric elements by raising element slightly and pulling directly away from receptacle. Remove the front two drip bowls. Set aside.

When raising or lowering the cooktop itself use the front two element openings.

CONTINUE INSTALLATION INSTRUCTIONS WITH SECTION D — INSTALLING UNIT