



ELECTRIC AND GAS DRYERS

Use & Care Guide

Table of Contents	2
-------------------------	---

TABLE OF CONTENTS

DRYER SAFETY	3
PARTS AND FEATURES	5
CHECKING YOUR VENT	6
DRYER USE	6
Starting Your Dryer.....	6
Stopping and Restarting.....	7
Drying, Cycle and Temperature Tips	7
Cycle Descriptions	7
Additional Features	8
Drying Rack (optional).....	8
DRYER CARE	9
Cleaning the Dryer Location	9
Cleaning the Lint Screen.....	9
Cleaning the Dryer Interior	9
Removing Accumulated Lint.....	9
Vacation and Moving Care.....	9
TROUBLESHOOTING	11
ASSISTANCE OR SERVICE	12

DRYER SAFETY

Your safety and the safety of others are very important.

We have provided many important safety messages in this manual and on your appliance. Always read and obey all safety messages.



This is the safety alert symbol.

This symbol alerts you to potential hazards that can kill or hurt you and others.

All safety messages will follow the safety alert symbol and either the word "DANGER" or "WARNING."

These words mean:

⚠ DANGER

You can be killed or seriously injured if you don't immediately follow instructions.

⚠ WARNING

You can be killed or seriously injured if you don't follow instructions.

All safety messages will tell you what the potential hazard is, tell you how to reduce the chance of injury, and tell you what can happen if the instructions are not followed.

WARNING: For your safety, the information in this manual must be followed to minimize the risk of fire or explosion, or to prevent property damage, personal injury, or death.

- Do not store or use gasoline or other flammable vapors and liquids in the vicinity of this or any other appliance.
- **WHAT TO DO IF YOU SMELL GAS:**
 - Do not try to light any appliance.
 - Do not touch any electrical switch; do not use any phone in your building.
 - Clear the room, building, or area of all occupants.
 - Immediately call your gas supplier from a neighbor's phone. Follow the gas supplier's instructions.
 - If you cannot reach your gas supplier, call the fire department.
- Installation, service, or conversions for use on other gas supplies must be performed by a qualified installer, service agency, or the gas supplier.

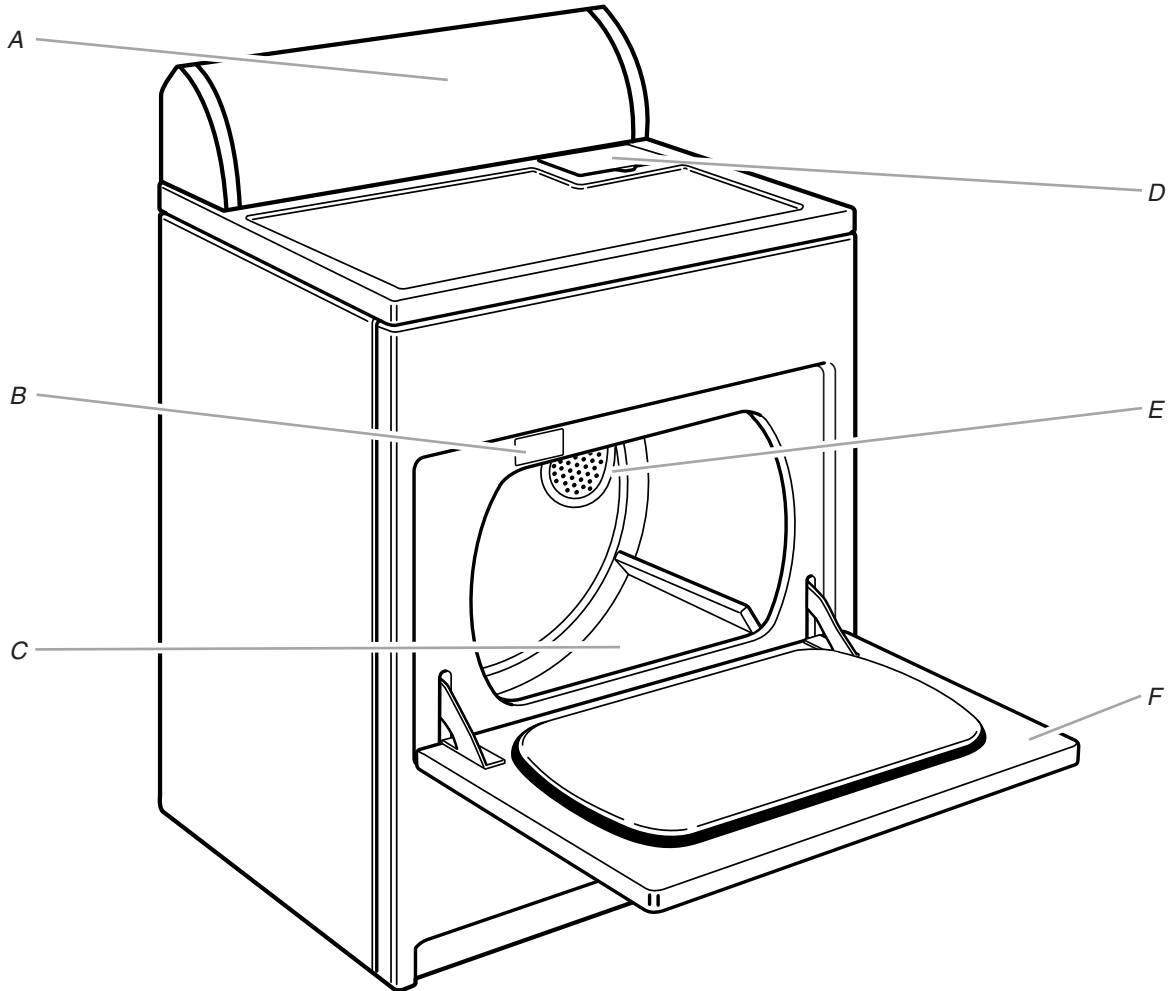
IMPORTANT SAFETY INSTRUCTIONS

WARNING: To reduce the risk of fire, electric shock, or injury to persons when using the dryer, follow basic precautions, including the following:

- Read all instructions before using the dryer.
- Gas dryers should only be installed in a room if the room meets the appropriate ventilation requirements specified in the national installation regulations. Make sure the room containing the dryer has an adequate air supply for gas combustion and/or drying operation. A window or equivalent means of ventilation must be opened in the room when the dryer is in use (an equivalent form of opening includes an adjustable louvre, hinged panel, or other means of ventilation that opens directly to outside air).
- Keep a minimum clearance of 4" (10 cm) between the rear of the dryer and any wall.
- The operation of this appliance may affect the operation of other types of gas appliances which take their air supply for safe combustion from the same room. There has to be adequate ventilation to replace exhausted air and thus avoid the back-flow of gases into the room from appliances burning other fuels, including open fires, when operating the tumble dryer. If in doubt, consult the appliance manufacturers.
- Do not obstruct the air supply to the dryer (see Installation Instructions for minimum clearances).
- Do not place items exposed to cooking oils in your dryer. Items contaminated with cooking oils may contribute to a chemical reaction that could cause a load to catch fire.
- Do not dry articles that have been previously cleaned in, washed in, soaked in, or spotted with gasoline, dry-cleaning solvents, cooking oils, or other flammable, or explosive substances as they give off vapours that could ignite or explode.
- Do not allow children to play on or in the dryer. Close supervision of children is necessary when the dryer is used near children.
- Before the dryer is removed from service or discarded, remove the doors to the drying compartment.
- Do not reach into the dryer if the drum is moving. A door switch is fitted for your safety.
- Do not install or store the dryer where it will be exposed to the weather.
- Do not tamper with controls.
- Do not continue to use this appliance if it appears to be faulty.
- Do not repair or replace any part of the dryer or attempt any maintenance unless specifically recommended in this Use and Care Guide. Repairs and servicing should only be carried out by competent service personnel.
- Do not use fabric softeners or products to eliminate static unless recommended by the manufacturer of the fabric softener or product.
- Do not use heat to dry articles containing foam rubber or similarly textured rubber-like materials.
- Always use the cool-down period at end of drying cycle to avoid a heat build-up in stored clothes.
- Clean dryer lint screen before or after each load. Do not operate dryer without lint screen in place.
- Keep area around the exhaust and inlet openings and adjacent surrounding areas free from the accumulation of lint, dust, and dirt.
- The interior of the dryer and exhaust vent should be cleaned periodically by qualified service personnel.
- See Installation Instructions for earthing instructions.
- If the supply cord is damaged, it must be replaced by the manufacturer or its service agent or a similarly qualified person in order to avoid a hazard.

SAVE THESE INSTRUCTIONS

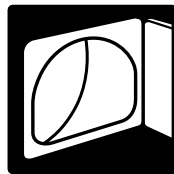
PARTS AND FEATURES



- A. Control panel
- B. Model and serial number label
- C. Dryer drum
- D. Lint screen
- E. Exhaust grill
- F. Wide-opening door

Additional features your dryer may have

Super wide-swing door



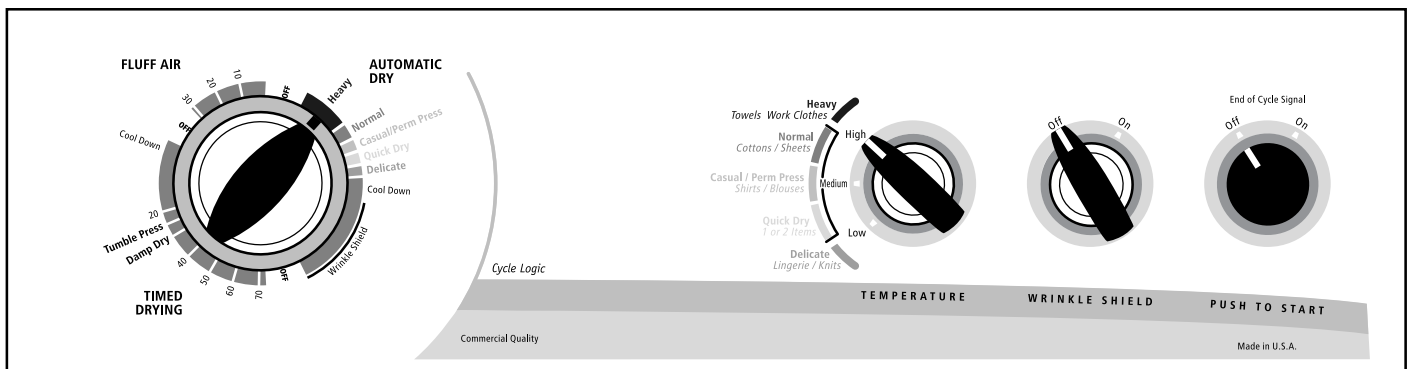
End of Cycle Signal selector

Wrinkle Shield™ selector

Automatic Dry sensor

Optional purchase

Drying rack



CHECKING YOUR VENT

Your dryer must be properly installed and vented to achieve maximum drying efficiency and shorten drying times. Use the minimum recommended installation clearances found in the Installation Instructions. See the Installation Instructions for more information.

⚠ WARNING



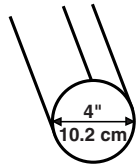
Fire Hazard

- Use a heavy metal vent.
- Do not use a plastic vent.
- Do not use a metal foil vent.
- Failure to follow these instructions can result in death or fire.

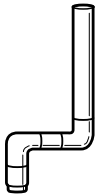
If the dryer is not properly installed and vented, it will not be covered under the warranty. Proper venting of your dryer is important for satisfactory drying results. See the Installation Instructions for more detail.

NOTE: Service calls caused by improper venting will be paid for by the customer, whether it was a paid installation or self-installed.

- Do not use plastic vent or metal foil vent. Use 4" (10.2 cm) metal or flexible metal vent. Do not kink or crush flexible metal vent. It must be completely extended to allow adequate exhaust air to flow. Check vent after installation. Refer to the Installation Instructions for proper length requirements of vent.
- Use a 4" (10.2 cm) exhaust hood.



- Use the straightest path possible when routing the vent.



Good



Better

- Use clamps to seal all joints. Do not use duct tape, screws or other fastening devices that extend into the interior of the vent to secure vent.
- Clean exhaust vent periodically, depending on use, but at least every 2 years, or when installing your dryer in a new location. When cleaning is complete, be sure to follow the Installation Instructions supplied with your dryer for final product check.

DRYER USE

Starting Your Dryer

⚠ WARNING



Explosion Hazard

Keep flammable materials and vapors, such as gasoline, away from dryer.

Do not dry anything that has ever had anything flammable on it (even after washing).

Failure to follow these instructions can result in death, explosion, or fire.

⚠ WARNING



Fire Hazard

No washer can completely remove oil.

Do not dry anything that has ever had any type of oil on it (including cooking oils).

Items containing foam, rubber, or plastic must be dried on a clothesline or by using an Air Cycle.

Failure to follow these instructions can result in death or fire.

Before using your dryer, wipe the dryer drum with a damp cloth to remove dust from storing and shipping.

- Clean lint screen before each load. See "Cleaning the Lint Screen."
- Load clothes loosely into the dryer and close the door. Do not pack the dryer. Allow space for clothes to tumble freely.



- Turn the Cycle Control knob to the recommended cycle for the type of load being dried. Use the Energy Preferred setting to dry most heavyweight and medium-weight loads. See "Drying, Cycle and Temperature Tips."

- Select a temperature setting on models with a Temp/Fabric selector. The cycle descriptions include temperature setting suggestions.

NOTE: The temperature selector is part of the Cycle Control knob on some models.

- Select the End of Cycle Signal, if available. The signal is helpful when drying permanent press or synthetics. Promptly remove these items from the dryer at the end of the cycle to help keep wrinkles from forming.

On some models you may have:

- An automatic End of Cycle Signal that will sound when cycle is completed.
- An End of Cycle Signal that can be adjusted. Turn the selector to the desired volume.
- An End of Cycle Signal that is part of the Start button. Turn the Start button to ON or OFF.

- Select the desired option. See “Additional Features.”

- Press the Start button.

Stopping and Restarting

You can stop your dryer anytime during a cycle.

To stop your dryer

Open the dryer door or turn the Cycle Control knob to OFF.

NOTE: The Cycle Control knob should point to an Off area when the dryer is not in use.

To restart your dryer

- Close the door.
- Select a new cycle and temperature (if desired).
- Press the Start button.

Drying, Cycle and Temperature Tips

Select the correct cycle and temperature for your load.

Cool Down tumbles the load without heat during the last few minutes of all cycles to make the load easier to handle.

Drying tips

- Follow care label directions when they are available.
- If desired, add a fabric softener sheet. Follow package instructions.
- Remove the load from the dryer as soon as tumbling stops, to reduce wrinkling. This is especially important for permanent press, knits and synthetic fabrics.

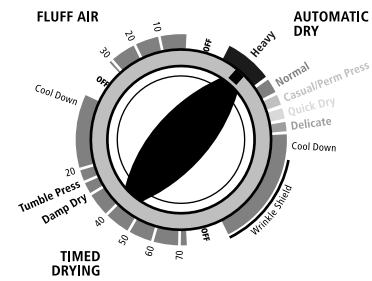
Cycle and temperature tips

- Dry most loads using the Energy Preferred setting, if available on your dryer.
- Use a High heat setting for drying heavyweight items such as towels and work clothes.
- Use a Medium heat setting for drying medium-weight items such as sheets, underwear, permanent press fabrics and some knits.
- Use a Low heat setting for drying lightweight items such as lingerie, blouses, dresses and some knits.
- Use a no-heat (air) setting for rubber, plastic or heat-sensitive fabrics.
- Line dry bonded or laminated fabrics.

NOTE: If you have questions about drying temperatures for various loads, refer to the care label directions. If you are unsure of the temperature to select for a load, select a lower setting rather than a higher setting.

Cycle Descriptions

This manual covers several different models. Your dryer may vary from the model shown and may not have all of the cycles and features described.



Cycle Control knob

Automatic dry cycle(s) (on some models)

Use your Automatic cycle to dry most loads. Your dryer has a control that senses the moisture level in the load and shuts off when the load reaches the selected dryness.

On some models

- Automatic Dry (High Heat) and (Low Heat)

Select the temperature by moving the Cycle Control knob toward Very Dry for bigger or heavier loads or Less Dry for smaller or lighter loads.

- Auto Dry

Select the temperature from the temperature selector based on the fabrics in your load.

After drying a load in any of the Automatic cycles, check the dryness.

- If the load is drier than you like, select a setting closer to Less Dry the next time you dry a similar load.
- If a load is not as dry as you like, complete drying using a timed cycle. Select a setting closer to Very Dry the next time you dry a similar load.

NOTE: Drying time varies with an Automatic cycle. The type of fabric, the size of the load, and the dryness selected affect drying time. See “Drying, Cycle and Temperature Tips.”

Timed Drying cycle(s)

Select the correct Timed Drying setting and temperature for your load.

Use a longer Timed Drying setting for heavyweight and bulky items, such as bedspreads and work clothes, or large loads that require a long drying time. Set the temperature selector, if available, to High Heat.

Use a shorter Timed Drying setting for lightweight items such as lingerie or knits. Set the temperature selector, if available, based on the fabrics in your load.

Air Fluff or Air Dry cycles

Use the Air Fluff or Air Dry cycle for items that require drying without heat such as rubber, plastic or heat-sensitive fabrics. Set the Cycle Control knob to Air Fluff or Air Dry. This chart shows examples of items that can be dried using the Air Fluff or Air Dry cycle.

Type of Load	Air Fluff or Air Dry cycle*
Foam rubber—pillows, padded bras, stuffed toys	20 - 30
Plastic—Shower curtains, tablecloths	20 - 30
Rubber-backed rugs	40 - 50
Olefin, polypropylene, sheer nylon	10 - 20

*(Minutes). Reset cycle to complete drying if needed.

When using Air Fluff or Air Dry

- Check that coverings are securely stitched.
- Shake and fluff pillows by hand periodically during cycle.
- Dry item completely. Foam rubber pillows are slow to dry.

Additional Features

This manual covers several different models. Your dryer may not have all of the features described.

Heavy Dry

Select this cycle to evenly dry large or heavy items such as thick cotton bath towels or robes. Set the Temperature selector, if available, to High Heat.

Cotton

Select this cycle to thoroughly dry heavy items such as sheets, mattress pads and quilts, or a load of towels. Set the Temperature selector, if available, to High Heat.

Synthetics/Permanent Press

Select this cycle to dry medium to lightweight synthetic or no-iron items such as shirts, blouses or dresses. Choose a Medium Heat setting if available.

Quick Dry

Use this cycle for drying small loads or loads that need a short drying time. Choose a High or Medium Heat setting depending on the types of fabrics being dried.

Delicates

Select this cycle to dry small loads or lightweight items. Set the Temperature selector, if available, to Low or Extra-Low Heat.

TUMBLE PRESS® setting

Select this cycle to help remove wrinkles from items such as clothing packed in a suitcase or items wrinkled from being left in the dryer too long. Set the Temperature selector, if available, to Medium or Low Heat depending on the fabrics in your load.

Damp Dry

Select this cycle to dry items to a damp level, or to dry items that do not require an entire drying cycle. Use the Damp Dry cycle on items such as jeans (to avoid stiffness) or cotton clothing (to make pressing easier). If your model has a Temperature selector, choose a temperature setting based on the fabrics in your load.

Wrinkle Shield™ Feature

When you are unable to remove a load from the dryer as soon as it stops, wrinkles can form. The Wrinkle Shield™ feature periodically tumbles, rearranges and fluffs the load for up to 30 minutes without heat to help keep wrinkles from forming. Press the Wrinkle Shield™ ON button to enable the Wrinkle Shield™ feature. A signal will sound periodically when the Wrinkle Shield™ feature is on if the End of Cycle Signal is selected. The signal and the tumbling will end when you open the dryer door, or when you turn the Cycle Control knob to Off.

DRYEL® fabric care system

When using DRYEL® fabric care, select the DRYEL® cycle setting and the DRYEL® temperature setting. DRYEL® fabric care, when used in accordance with the manufacturer's directions, has been tested and approved for use in full-size dryers built by Whirlpool Corporation.

End of Cycle Signal

- The End of Cycle signal sounds when a cycle is complete. If your End of Cycle signal is selectable, the signal will sound only if set to On.
- If the Wrinkle Shield feature is on, the signal sounds every few minutes. The signal stops when you open the door or turn the Cycle Control knob to Off.

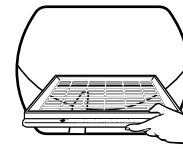
Drying Rack (optional)

The drying rack is useful for machine drying items you would not necessarily want to tumble dry or that you would normally line dry (for example, tennis shoes, pillows, stuffed toys).

If your model does not have a drying rack, you can order one by contacting the dealer from whom you purchased your dryer.

To use the drying rack

1. Slide rear pegs into the dimples on the back wall of the dryer. Lower the front legs to rest on the dryer opening.



2. Put the wet items on top of the rack. Leave space between the items so air can reach all the surfaces. Close the door.
NOTE: Do not allow items to hang over the edge of the rack.
3. Select cycle and temperature to match the fabrics in your load. Items containing foam, rubber or plastic must be dried on a clothesline or by using an air cycle. Refer to the following table.
4. Press START. Reset cycle to complete drying, if needed.

NOTE: The rack must be removed for normal tumbling. Do not use the automatic cycle with the drying rack.

Rack Dry	Cycle	Temp	Time*
Wool Sweaters Block to shape and lay flat on the rack	Timed	Low	60
Stuffed toys or pillows Cotton or polyester fiber filled	Timed	Low	60
Stuffed toys or pillows Foam rubber filled	Air (no heat)	None	90
Sneakers or canvas shoes	Air (no heat)	None	90

*(Minutes). Reset cycle to complete drying if needed.

DRYER CARE

Cleaning the Dryer Location

Keep dryer area clear and free from items that would obstruct the flow of combustion and ventilation air.

⚠ WARNING



Explosion Hazard

Keep flammable materials and vapors, such as gasoline, away from dryer.

Place dryer at least 18 inches (46 cm) above the floor for a garage installation.

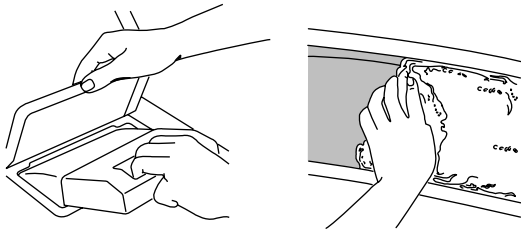
Failure to do so can result in death, explosion, or fire.

Cleaning the Lint Screen

Every Load Cleaning

The lint screen is located on top of the dryer. Clean lint screen before each load. A screen blocked by lint can increase drying time.

1. Pull the lint screen toward you. Roll lint off the screen with your fingers. Do not rinse or wash screen to remove lint. Wet lint is hard to remove.



2. Push the lint screen firmly back into place.

IMPORTANT:

- Do not run the dryer with the lint screen loose, damaged, blocked or missing. Doing so can cause overheating and damage to both the dryer and fabrics.
- If lint falls off the screen into the dryer during removal, check the exhaust hood and remove the lint.

As Needed Cleaning

1. Roll lint off the screen with your fingers.
2. Wet both sides of lint screen with hot water.
3. Wet a nylon brush with hot water and liquid detergent. Scrub lint screen with the brush to remove residue buildup.
4. Rinse screen with hot water.
5. Thoroughly dry lint screen with a clean towel. Replace screen in dryer.

Cleaning the Dryer Interior

1. Apply a liquid, nonflammable household cleaner to the stained area of the drum and rub with a soft cloth until stain is removed.
2. Wipe drum thoroughly with a damp cloth.
3. Tumble a load of clean cloths or towels to dry the drum.

NOTE: Garments that contain unstable dyes, such as denim blue jeans or brightly colored cotton items, may discolor the dryer interior. These stains are not harmful to your dryer and will not stain future loads of clothes. Dry unstable dye items inside-out to avoid dye transfer.

Removing Accumulated Lint

From Inside the Dryer Cabinet

Lint should be removed every 2 years, or more often, depending on dryer usage. Cleaning should be done by a qualified person.

From Inside the Exhaust Vent

Lint should be removed every 2 years, or more often, depending on dryer usage.

Vacation and Moving Care

Vacation care

Operate your dryer only when you are at home. If you will be on vacation or not using your dryer for an extended period of time, you should:

1. Unplug dryer or disconnect power.
2. If you have a gas dryer, close shutoff valve in gas supply line.
3. Clean lint screen. See "Cleaning the Lint Screen."


Moving care - Electric Dryers

For power supply cord-connected dryers:

1. Unplug the power supply cord.
2. Make sure leveling legs are secure in dryer base.
3. Use masking tape to secure dryer door.

For direct-wired dryers:

⚠ WARNING



Electrical Shock Hazard

Disconnect power before servicing.

Replace all parts and panels before operating.

Failure to do so can result in death or electrical shock.

1. Disconnect power.
2. Disconnect wiring.
3. Make sure leveling legs are secure in dryer base.
4. Use masking tape to secure dryer door.

Moving care - Gas Dryers

1. Unplug the power supply cord.
2. Close shutoff valve in gas supply line.
3. Disconnect gas supply line pipe and remove fittings attached to dryer pipe.
4. Cap the open fuel supply line.
5. Make sure leveling legs are secure in dryer base.
6. Use masking tape to secure dryer door.

TROUBLESHOOTING

First try the solutions suggested here and possibly avoid the cost of a service call...

Dryer Operation

Dryer will not run

- **Has a household fuse blown, or has a circuit breaker tripped?**
Electric dryers use 2 household fuses or circuit breakers. The drum may be turning, but you may not have heat. Replace the fuse or reset the circuit breaker. If the problem continues, call an electrician.
- **Is the correct power supply available?**
Electric dryers require 230-240 volt power supply. Check with a qualified electrician.
- **Was a regular fuse used?**
Use a time-delay fuse.
- Is the dryer door firmly closed?
- Was the Start button firmly pressed?
- **Is a cycle selected?**
The dryer will not start in the Wrinkle Shield™ position. Move the dial past OFF.

No heat

- **Has a household fuse blown, or has a circuit breaker tripped?**
Electric dryers use 2 household fuses or circuit breakers. The drum may be turning, but you may not have heat. Replace the fuse or reset the circuit breaker. If the problem continues, call an electrician.
- **For gas dryers, is the valve open on the supply line?**

Unusual sounds

- **Has the dryer had a period of non-use?**
If the dryer hasn't been used for a while, there may be a thumping sound during the first few minutes of operation.
- **Is a coin, button, or paper clip caught between the drum and front or rear of the dryer?**
Check the front and rear edges of the drum for small objects. Clean out pockets before laundering.
- **Is it a gas dryer?**
The gas valve clicking is a normal operating sound.
- **Are the four legs installed, and is the dryer level front to back and side to side?**
The dryer may vibrate if not properly installed. See the Installation Instructions.
- **Is the clothing knotted or balled up?**
When balled up, the load will bounce, causing the dryer to vibrate. Separate the load items and restart the dryer.

Timer does not noticeably advance

- **Is the dryer set to Timed or Air Dry?**
The timer moves slowly and continuously for the time setting.
- **Is the dryer set to Automatic Drying?**
The timer moves only when the clothing is mostly dry.

Dryer Results

Clothes are not drying satisfactorily, drying times are too long, or load is too hot

- **Is the lint screen clogged with lint?**
Lint screen should be cleaned before each load.

⚠ WARNING



Fire Hazard

- Use a heavy metal vent.**
- Do not use a plastic vent.**
- Do not use a metal foil vent.**
- Failure to follow these instructions can result in death or fire.**

- **Is the exhaust vent or outside exhaust hood clogged with lint, restricting air movement?**
Run the dryer for 5-10 minutes. Hold your hand under the outside exhaust hood to check air movement. If you do not feel air movement, clean exhaust system of lint or replace exhaust vent with heavy metal or flexible metal vent. See the Installation Instructions.
- **Are fabric softener sheets blocking the grille?**
Use only one fabric softener sheet, and use it only once.
- **Is the exhaust vent the correct length?**
Check that the exhaust vent is not too long or has too many turns. Long venting will increase drying times. See the Installation Instructions.
- **Is the exhaust vent diameter the correct size?**
Use 4" (10.2 cm) diameter vent material.

⚠ WARNING



Explosion Hazard

Keep flammable materials and vapors, such as gasoline, away from dryer.

Place dryer at least 18 inches (46 cm) above the floor for a garage installation.

Failure to do so can result in death, explosion, or fire.

- **Is the dryer located in a room with temperature below 45°F (7°C)?**
Proper operation of dryer cycles requires temperatures above 45°F (7°C).
- **Is the dryer located in a closet?**
Closet doors must have ventilation openings at the top and bottom of the door. The sides of the dryer require a minimum of 1" (2.5 cm) of airspace, and the rear of the dryer requires 5" (12.7 cm). See the Installation Instructions.
- **Has an air dry cycle been selected?**
Select the right cycle for the types of garments being dried.
- **Is the load too large and heavy to dry quickly?**
Separate the load to tumble freely.

Cycle time too short

⚠ WARNING

Excessive Weight Hazard

Use two or more people to move and install dryer.

Failure to do so can result in back or other injury.

- **Is the automatic cycle ending early?**
The load may not be contacting the sensor strips. Level the dryer.

Change the dryness level setting on Automatic Cycles. Increasing or decreasing the dryness level will change the amount of drying time in a cycle.

Lint on load

- **Is the lint screen clogged?**
Lint screen should be cleaned before each load.

Stains on load or drum

- **Was dryer fabric softener properly used?**
Add dryer fabric softener sheets at the beginning of the cycle. Fabric softener sheets added to a partially dried load can stain your garments.

Drum stains are caused by dyes in clothing (usually blue jeans). This will not transfer to other clothing.

Loads are wrinkled

- **Was the load removed from dryer at the end of the cycle?**
- **Was the dryer overloaded?**
Dry smaller loads that can tumble freely.

Odors

- **Have you recently been painting, staining or varnishing in the area where your dryer is located?**
If so, ventilate the area. When the odors or fumes are gone from the area, rewash and dry the clothing.
- **Is the electric dryer being used for the first time?**
The new electric heating element may have an odor. The odor will be gone after the first cycle.

ASSISTANCE OR SERVICE

Before calling for assistance or service, please check "Troubleshooting." If you still need help, follow the instructions below.

If you need replacement parts

If you need to order replacement parts, we recommend that you use only factory specified parts. These parts will fit right and work right because they are made with the same precision used to build every new WHIRLPOOL® appliance. To locate factory specified replacement parts in your area, call the dealer from whom you purchased the dryer or a Whirlpool designated service company.

NOTE: For gas dryers only, if the power supply cord is damaged, it must be replaced by a special cord available from the dealer from whom you purchased the dryer or a Whirlpool designated service company.

For warranty information

Contact the dealer from whom you purchased your dryer.