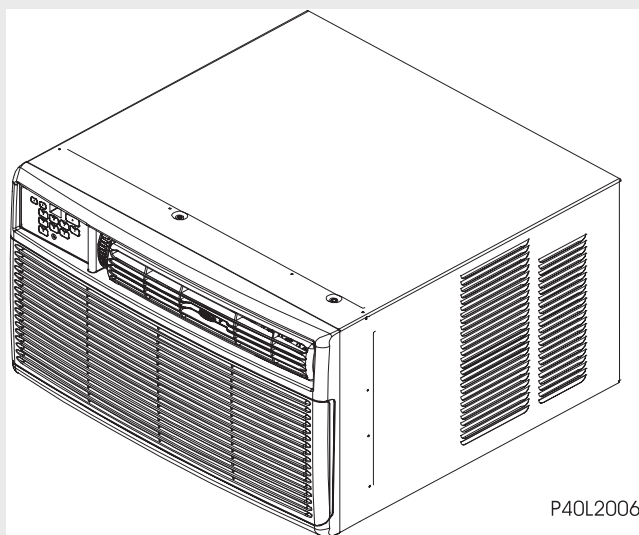


# Frigidaire

## Factory Parts Catalog



P40L2006

Product No.	FAS156N1A2
Series	heavy duty
Volts	115
BTU-Cooling	15100 BTU
Wiring Diagram	5995409363
Owner's Guide	309000855
Installation Instructions	309000906
Market	North America

 **Electrolux**

Electrolux Major Appliances  
North & Latin America  
P.O. BOX 212378  
AUGUSTA, GA 30917

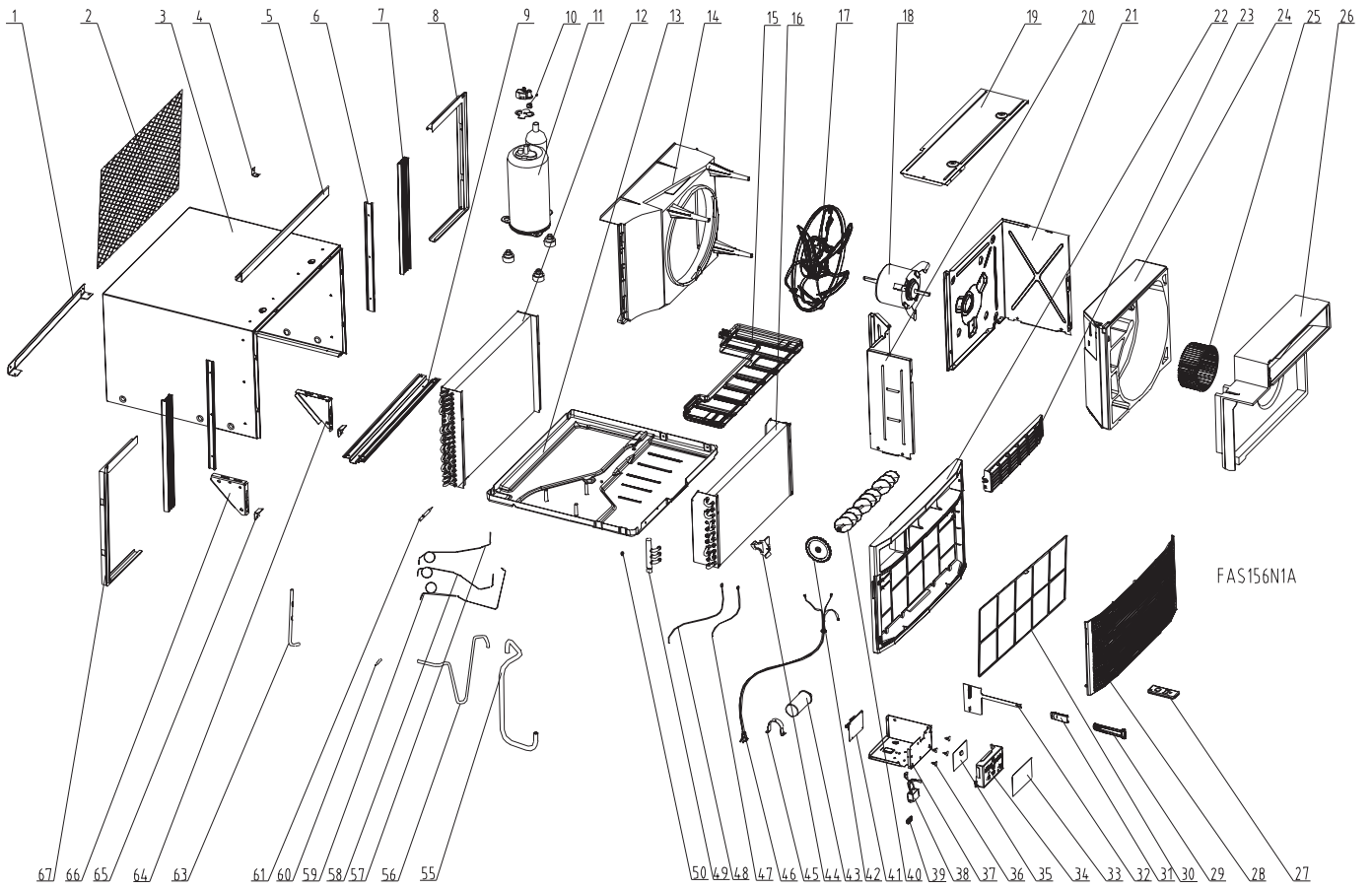
Publication No.  
**5995437794**  
05/05/26  
(EN/SERVICE/WC)  
099

**ROOM AIR  
CONDITIONER**

**Model No.  
FAS156N1**

Copyright © 2005 Electrolux Home Products, Inc.  
All rights reserved.

**RECOMMENDED SPARE PARTS**

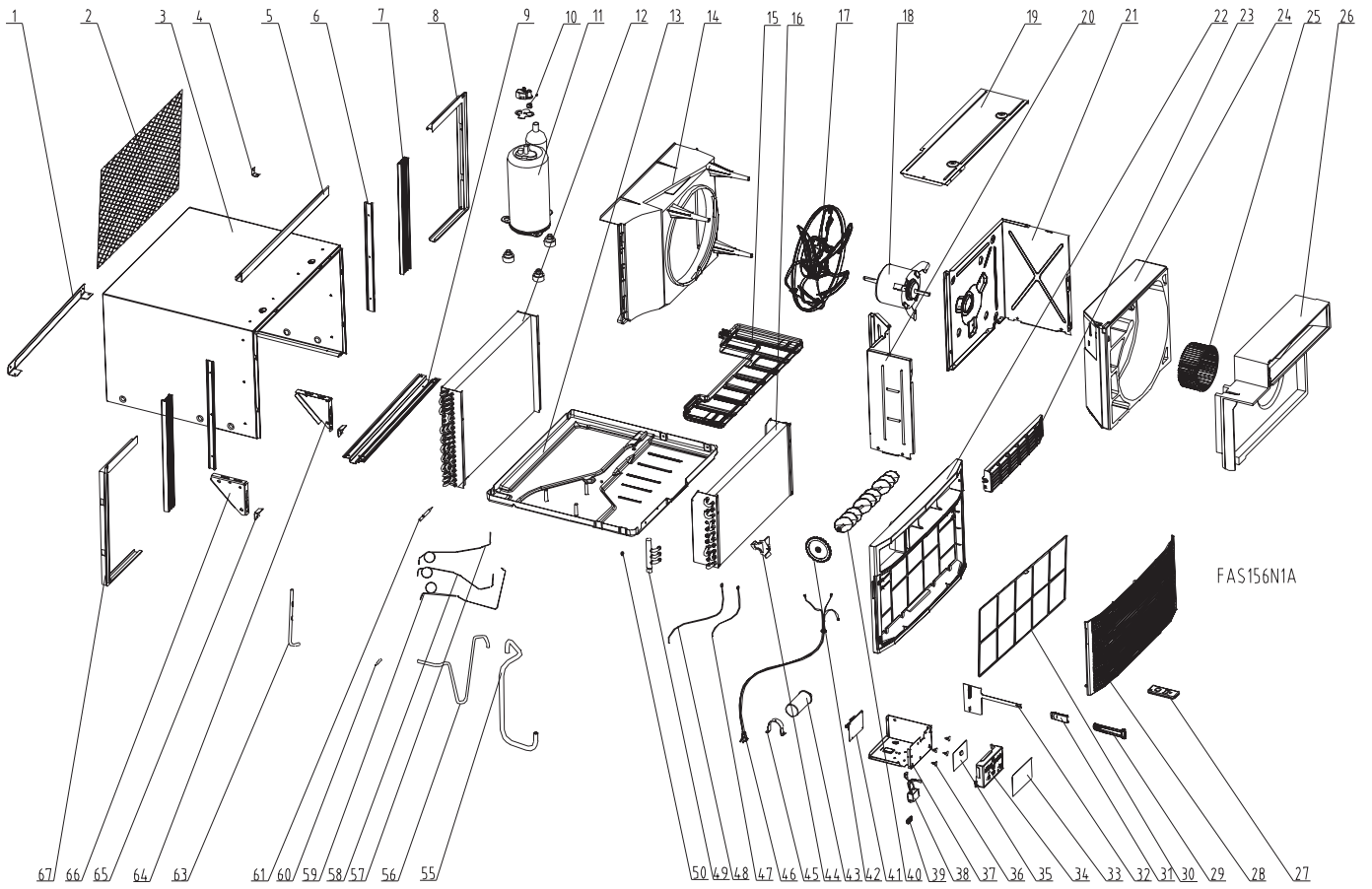


## RECOMMENDED SPARE PARTS

---

POS. NO	PART NO.	DESCRIPTION
1	5304414097	Rail, cabinet bottom, rear
2	5304408741	Grille, rear panel, aluminum
3	309623906	Cabinet, wrapper/sleeve
4	5303211056	Bracket, sash lock
5	5304414116	Rail, cabinet top, front
6	5304414933	Retainer, shutter mount, cabinet side
7	309645602	Shutter, accordion panel, RH/LH, window closure
8	5304414929	Frame, shutter, gray, RH, extension
9	5304416310	Rail, cabinet bottom, front
10 #	5304430864	Overload Protector
11 #	309603117	Compressor
12 #	5303306719	Condenser
13	309632910	Base, compressor mtg., with studs
14	309623201	Shroud, cond fan motor
15	309623501	Tray, evap drip
16 #	309634101	Evaporator
17 #	5303311048	Fan Blade, with clamp
18 #	309630615	Motor, fan, 1 Speed
19	309630302	Cover, blower wheel, top
20	309623602	Bulkhead, control system
21	309623401	Bulkhead, air system
22	309900101	Frame, cabinet front
23	309900301	Louver, horizontal
24	309630102	Housing, blower scroll
25 #	309633001	Blower Wheel, plastic, with clamp
26	309630203	Plate, scroll cover
27 #	309902201	Remote Control, transmitter, with lcd
28	309900201	Panel, front grille
29	309900601	Handle, vent opener
30	309639001	Filter, micro-biologic, framed
31	309902801	Detent, vent handle
32	309321402	Door, vent, with actuator
33	309901701	Overlay, control display
34	309900501	Enclosure, input pcb, control panel
35 #	309901601	PC Board, input/display
36	5304413781	Hardware, PCB support
37	309630404	Control Box
38 #	309900701	Ionizer
39	309111201	Grommet, wire protector
40	309904601	Louver, vertical
41 #	309901401	PC Board, power, 115 V, variable speed
42	309900401	Wheel, louver adjuster
43 #	5304430863	Capacitor, 370 V, 60+10 mfd
44	5304414108	Holder, thermistor clip, 5/16"
45	5303303077	Strap, capacitor mtg.
46 #	309343133	Power Cord, LCDI-type A, 14 AWG, 230 V, with test/reset
47 #	309201602	Sensor, thermistor, ambient temp
48 #	309201603	Sensor, thermistor, evap defrost
49 #	309330502	Manifold Assembly, with rings
50	5303302254	Nut, expansion type
55 #	309651801	Tube, suction, copper

**RECOMMENDED SPARE PARTS**



---

**RECOMMENDED SPARE PARTS**


---

POS. NO	PART NO.	DESCRIPTION
56 #	309651701	Tube, discharge, copper
57 #	309333001	Tube, capillary, copper, top
58 #	309333201	Tube, capillary, copper, middle
59 #	309333101	Tube, capillary, copper, bottom
60 #	309111001	Fitting, reducer, .101/.104 ID, copper tube
61 #	5303290357	Strainer
63 #	5304417722	Tube, process, copper, cond. outlet
64	5304414105	Bracket, cab support, RH
65	3001815	Support, angle bracket, window sill mt.
66	5304414106	Bracket, cab support, LH
67	5304414928	Frame, shutter, gray, LH, extension

### WIRING DIAGRAM

