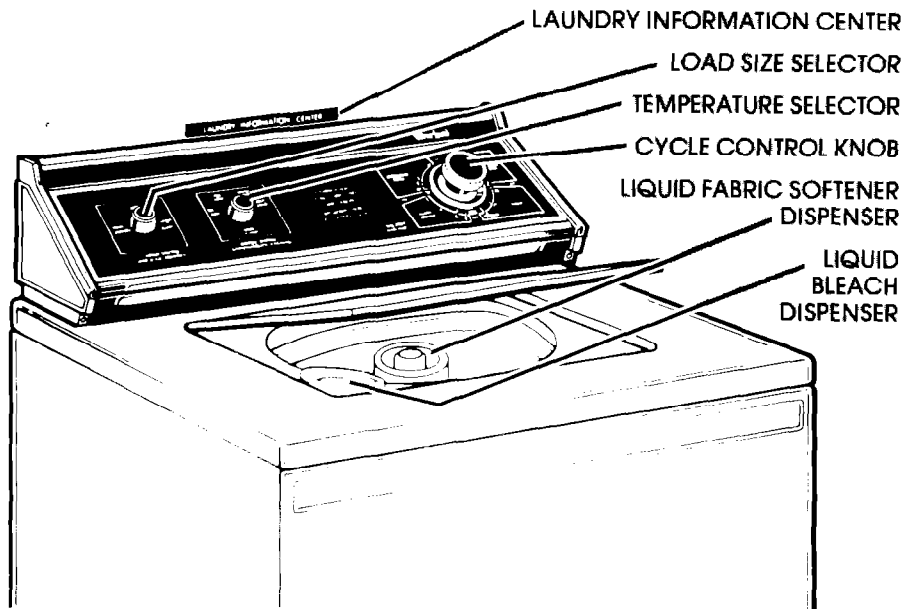


**Models LA6700XK;
Regular Capacity**



Whirlpool AUTOMATIC WASHER

Use & Care Guide



Copy Your Model and Serial Numbers Here

When you need service, or call with a question, have this information ready:

1. **Complete** Model and Serial Numbers (from the plate under the lid near the hinge).
2. Purchase date from sales slip (or date installed).

Copy this information in these spaces. Keep this book in the Laundry Information Center with your *Laundry Guide*, sales slip and warranty.

Model Number

Serial Number

Purchase, Install or Date

Service Company and Phone Number

Before using your Washer

Please read this booklet to be sure your washer is installed and used properly. It will help you get the best results and longest life your washer was designed to give.

You are personally responsible for making sure that your washer...

- Is installed by a qualified installer.
- Is properly installed and leveled on a floor that can support the weight.*
- Is connected to the right kind of outlet, electric supply, water supply and drain.*
- Is properly electrically grounded.*
- Is used only for jobs normally expected of home automatic washers.
- Is properly maintained.
- Is protected from the weather.
- Is not run by children or anyone unable to operate it properly.

Remove the Consumer Buy Guide label. It will be easier to remove before the washer is used.

You may want to wipe out the basket with a damp cloth before using to remove dust from storing or shipping.

SPECIAL INSTRUCTIONS: See the Laundry Guide for tips on detergents, other laundry aids and instructions for washing special items.

* See the Installation Instructions for complete information.

SAFETY FIRST

Do not permit children to operate or play with the washer.

CAUTION: Store laundry detergent and additives in a cool, dry place where children can't reach them.

SPINNING SAFETY

If the lid is opened while the basket is spinning, the basket will automatically stop in a few seconds. **DO NOT ADD OR REMOVE ITEMS UNTIL THE BASKET STOPS COMPLETELY.**

SPECIAL CAUTION

Flammable gases may build up in hot water pipes and heater. This can happen when hot water hasn't been used for a while (usually two weeks or more).

To prevent injury or damage, allow any gases to escape by running hot water from the faucet nearest the washer for several minutes. Don't smoke near the faucet while it is open, and turn off any open flame.

Contents

Before Using Your Washer	2
Loading Your Washer	3
MAGIC CLEAN Lint Filter	3
Using Your Washer	4
Water Levels and Load Sizes	5
Using the Dispensers	6
Liquid Fabric Softener Dispenser	6
Liquid Bleach Dispenser	6
Important Detergent Information	7
Cycle Operation	8
PERMANENT PRESS	8
KNITS GENTLE	8
REGULAR HEAVY	8
SOAK CYCLE	10
PRE-WASH	10
For Rinsing Only	10
For Spinning Only	10
If You Need Service or Assistance	11
1. Before Calling for Assistance	11
2. If You Need Assistance	12
3. If You Need Service	12
4. If You Have a Problem	12

Loading your Washer



For best washing results and energy savings, sort the laundry carefully.

1. Sort the Laundry into Loads.

- Group the laundry into loads that can be washed and dried together. See the Laundry Guide for information and samples of typical loads.
- Try to mix large and small items for best movement in the washer.

2. Measure Detergent; Add to Washer Basket.

- See detergent information on page 7 and in Section IV of the Laundry Guide.

3. Load the Washer.

- Load without packing so items can move freely for best cleaning and least wrinkling.
- Spread the load evenly. (Don't put all the towels on one side and a few wash cloths on the other.) An unbalanced load can cause the washer to shake during spinning.

4. Pour Liquid Bleach into the Dispenser.

- See Page 6 and the "Laundry Aids" section of the Laundry Guide for more information.

5. Add Diluted Fabric Softener to the Dispenser.

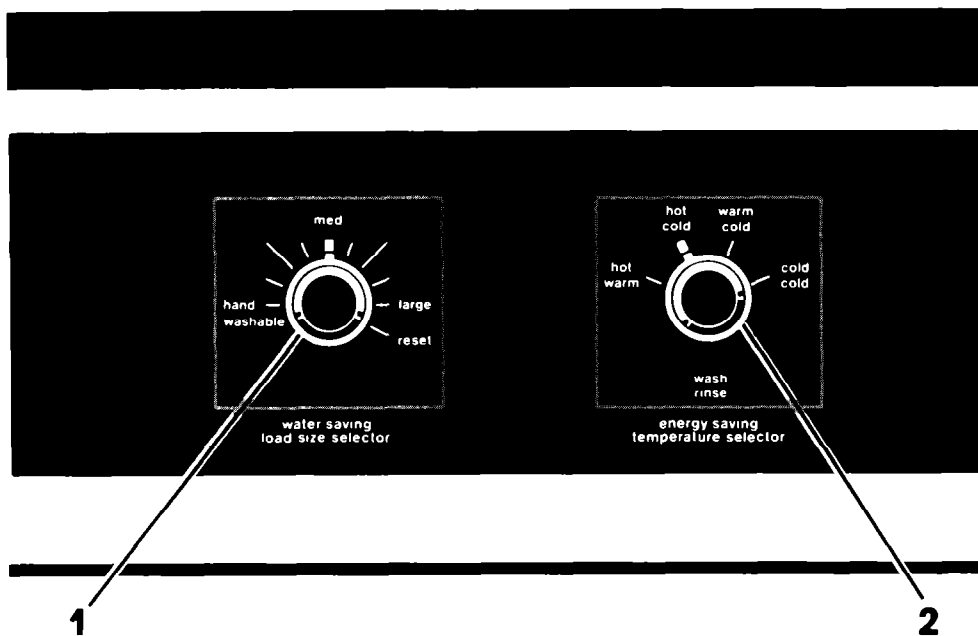
- **DO NOT ADD FABRIC SOFTENER TO THE WASH.** Fabric softeners can combine with soap or detergent to form greasy stains on fabrics.

MAGIC CLEAN[®] Lint Filter

The lint filter is self-cleaning. It filters water used in both the wash and the rinse. When the washer drains, lint collected is flushed away.

If your washer drains into a tub, watch the drain strainer for the lint. A linty load can plug the tub drain and cause an overflow.

Using your Washer



Start your washer after you put in detergent, the load, and any other laundry aids according to information on pages 3, 5, 6 and 7.

1. Set the LOAD SIZE SELECTOR.

- Select the water level that matches the size of the load. See page 5 for more information.
- To change the setting on the **LOAD SIZE SELECTOR**, first move it to **RESET**. Then move it back to the setting you want.

IMPORTANT: For the best cleaning results with the least wrinkling, make sure the load has enough water for items to move freely.

2. Set the TEMPERATURE SELECTOR.

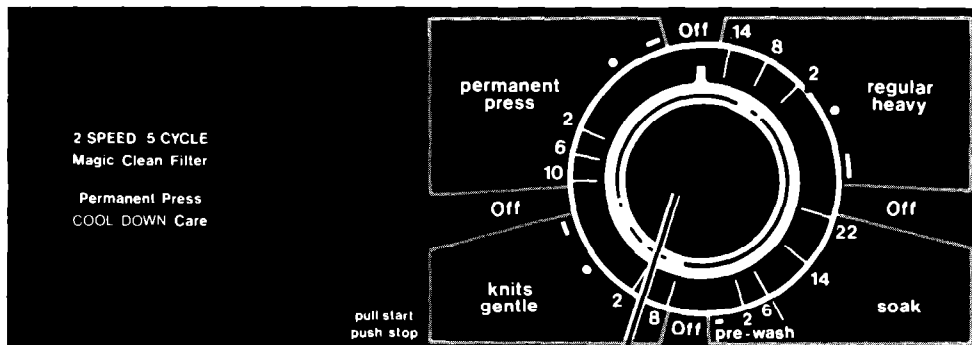
- Match the wash and rinse water temperatures to the type of fabrics and soils being washed. (See the instructions under the washer lid and on page 14 in your *Laundry Guide*.)
- Be sure to use a cold rinse for **PERMANENT PRESS** and **KNITS GENTLE** Cycles.

Cold water rinses save energy and help prevent wrinkles from setting into fabrics.

3. Select a Cycle and Start the Washer.

- Push the Cycle Control Knob in and turn it to the right (clockwise).
- Stop when the pointer is on the *number of minutes* of washing you want in the cycle you want.
- Instructions for which cycles to use for each fabric type are under the lid.
- To start the washer, pull the Cycle Control Knob out. When the cycle is over, the washer will stop.
- **To stop the washer at any time during a cycle, push the Control Knob in.** Pull it out to restart the washer.
- **To change a setting,** push the Control Knob in to stop the washer. Then turn the Control Knob to the right (clockwise) to the setting you want. Pull the knob out to start the washer.
- Pages 8-11 show what happens in each cycle.

Whirlpool



USING YOUR WASHER / WATER LEVELS

Water Levels and Load Sizes

The **LOAD SIZE SELECTOR** lets you control the amount of water that fills the washer. The selector can be set at any water level between **HANDWASHABLE** and **LARGE**.

WATER LEVELS

Setting	Gallons / Liters
HANDWASHABLE	9.1 34.5
MEDIUM	13.0 49.2
LARGE	16.9 64.0

† Approximate fill with load

To change the water level setting, move the **LOAD SIZE SELECTOR** to **RESET**. Then move it to the setting you want. **To save water and energy, match the water level to the load size.**

For the best cleaning results, the load should move freely in the water. Watch for rollover; an item (like a sock) should sink in the middle and come up later on the outside.

Be sure to read pages 11 - 13 in your *Laundry Guide*. You will find more information on loading and load sizes.

IMPORTANT:

- The **HANDWASHABLE** setting is designed for very small loads. It uses very little water. Too big a load in this amount of water may tear some items.
- Water may splash if you use very low water levels with the **REG / HEAVY** Cycle. If this happens, move the **LOAD SIZE SELECTOR** to **RESET**. Then move it to a higher setting.

3

Using the Dispensers

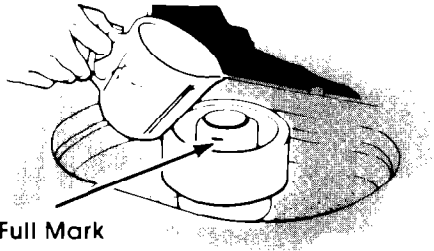
You may want to use liquid bleach and fabric softeners in some loads. Your washer has dispensers designed to automatically add these liquid laundry aids at the correct time.

Follow the product package recommendations carefully. Use the dispensers for best results.

Liquid Fabric Softener Dispenser

The dispenser for liquid fabric softener fits over the top of the agitator. The dispenser will hold enough **diluted** fabric softener for one deep rinse.

- After adding the detergent and the load, fit the dispenser over the top of the agitator cap.



Full Mark

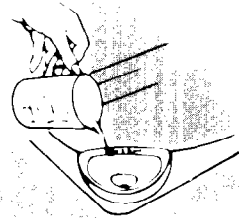
- Following directions on the bottle, add the correct amount of fabric softener. Use a cup with a pouring spout to avoid dripping any on the load.
- **IMPORTANT: Add enough hot or warm water to fill the dispenser to the FULL mark.**
- Diluted fabric softener will be added just before the washer starts filling for the rinse. **NOTE:** Do not stop the washer **during** the first spin (when the wash water is spinning out). If you do, the fabric softener will be added to the wet, soapy load. This can cause stains.
- Clean the dispenser after each use with warm **water only**. Detergent can make softeners sticky and lumpy.

Liquid Bleach Dispenser

The bleach dispenser is under the lid of the washer in the front corner. It has the words, LIQUID BLEACH, on it.

- Before starting the washer, but after loading it, add the bleach.
- Use a measuring cup with a pouring spout to help avoid spilling or spattering the bleach.
- Follow the directions on the bottle for the amount to use. **Never use more than 1 cup (250 mL) for a full load. Use less with lower water level settings.**

Use a standard measuring cup with a pouring spout to fill dispensers.



- **Do not let any bleach run down into the washer basket. Concentrated bleach will damage any fabric.**

Important Detergent Information

Detergents and soaps clean by loosening soil, and by holding it in the water so it drains away. If not enough detergent is used, soil and lint can settle back on the items in the load.

SOAP works best in *soft water* (0-4 grains hardness). In harder water, both the wash and rinse water should be softened. Use enough soap to make about 1½ to 2 inches (3.8 to 5.5 cm) of suds.

DETERGENT works in *hard or soft water*. Package directions are usually based on soft water and

washers with normal-size tubs. Use **more detergent...**

1. for hard water.
2. for heavy greasy or oily soils.
3. if the detergent is low phosphate.
4. for cold-water washes.

DETERGENT SUDS. There are high, normal and low sudsing powdered detergents. If the recommended amount of detergent makes too much suds, switch to a lower sudsing brand. **DO NOT REDUCE THE AMOUNT** of detergent.

Use the following chart as beginning suggestions for powdered and liquid detergent amounts. See **your Laundry Guide for more information (pages 14-22).**

RECOMMENDED AMOUNT OF DETERGENT* – FULL TUB

	WATER HARDNESS IN GRAINS		
	0-4 Grains	4-10 Grains	10-20 Grains
Powdered Detergents			
Low Suds	¾ cup (175 mL)	1¼ cups (250-300 mL)	1¼-1½ cups (300-350 mL)
Normal Suds	1¼ cups (300 mL)	1¾ cups (425 mL)	2-2¼ cups (475-525 mL)
High Suds	1¼-1½ cups (300-350 mL)	2 cups (475 mL)	2½ cups (600 mL)
No phosphate Liquid Detergents	– Follow package recommendations – ¼ to 1 cup (60 to 250 mL), depending on the brand and amount of soil. Follow package recommendations.		

These recommendations do not apply...

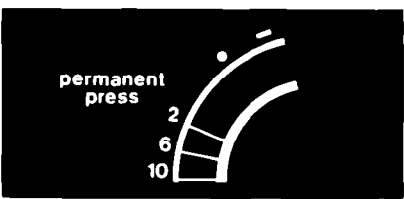
- In areas where phosphates are banned.
- In areas with laws limiting (by weight or percentage) the amount of detergent used in a wash load.

Cycle Operation

Your washer has five cycles on the Cycle Control Dial. Each cycle is designed to match the fabric type with pre-set agitation and spin speeds.

The numbers in each cycle are for the number of minutes you want the washer to agitate before it drains and fills for the rinse. You will want longer agitation times for heavily soiled loads. You choose the wash and rinse.

WHAT HAPPENS IN EACH CYCLE:

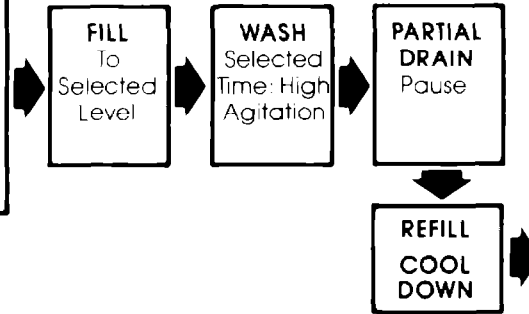
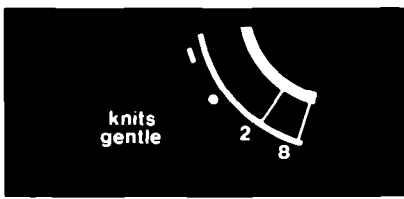


permanent press

- SET LOAD SIZE
- SET WATER TEMPERATURES
- PUSH IN KNOB, TURN TO CYCLE AND TIME
- PULL OUT TO START

PERMANENT PRESS CYCLE

Use for permanent press fabrics. Controlling of the wash water and low spin speeds help prevent the setting of wrinkles.





knits gentle

- SET LOAD SIZE
- SET WATER TEMPERATURES
- PUSH IN KNOB, TURN TO CYCLE AND TIME
- PULL OUT TO START

KNITS GENTLE CYCLE

Use for delicate items and washable synthetic knits such as polyester, nylon, acrylic. Wash nylon hose or party hose in a net laundry bag.

regular heavy

- SET LOAD SIZE
- SET WATER TEMPERATURES
- PUSH IN KNOB, TURN TO CYCLE AND TIME
- PULL OUT TO START

REGULAR HEAVY CYCLE

Use for sturdy white and colorfast cottons, and for heavy work clothes. High agitation and spin speeds are pre-set for best cleaning results.



water temperatures you want with the **TEMPERATURE SELECTOR**.

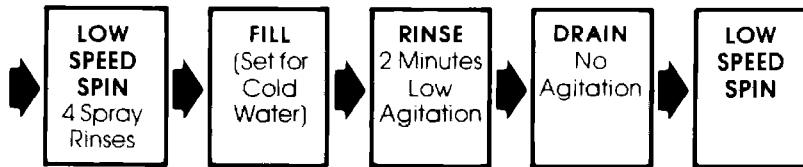
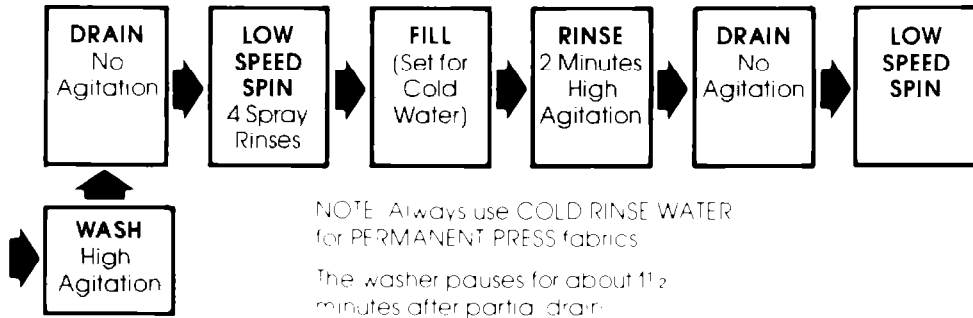
You set the amount of water that fills the tub with the **LOAD SIZE SELECTOR**.

NOTE: You may notice that some of the "SPIN" cycles have **SPRAY RINSES**. Cold water is sprayed on the

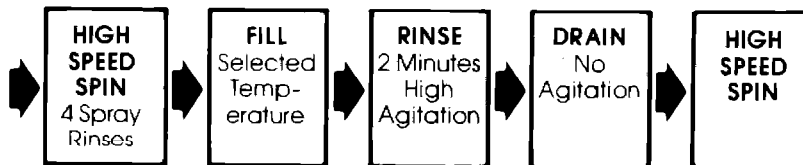
spinning load to help rinse and remove detergent residue.

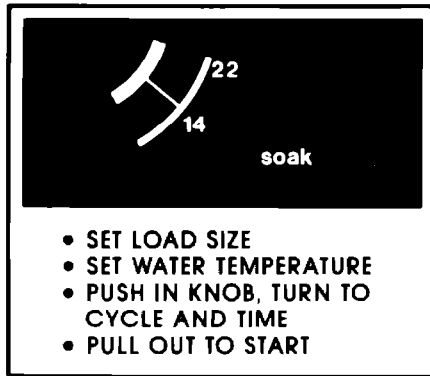
If you turn to a cycle and start the washer but change your mind, push in on the Cycle Control Knob and turn to the right (clockwise) to the setting you want. Then pull it out to start.

CYCLE OPERATION



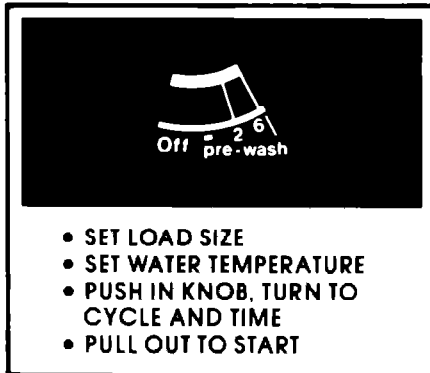
NOTE: Always use COLD RINSE WATER for Knits and Delicate items





SOAK CYCLE

This cycle is not for washing; it soaks, agitates, spins, but the water and suds (no rinse). Use it for stained, yellowed, grey or heavily soiled laundry with a detergent or pre-soak product. Chlorine bleach, if wanted, should be added to the cycle you use after the SOAK Cycle is over.

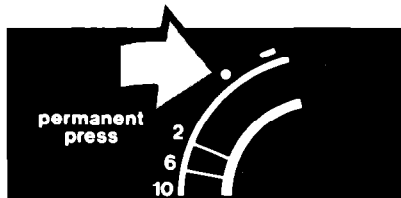


PRE-WASH CYCLE

Use for heavily soiled items that may need two washes. Use enough detergent for a single wash. When the washer stops, add more detergent and select a cycle.



For Rinsing Only



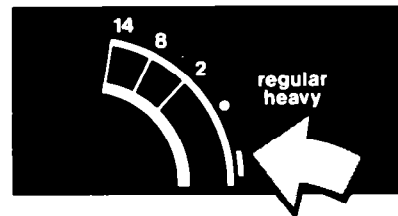
Your washer can be set to rinse only. Use the setting for an extra rinse, or for laundry that only needs a rinse and spin.

There is a dot just after the numbers in PERMANENT PRESS, REGULAR HEAVY and KNITS GENTLE. If you push in on the Cycle Control Knob, turn the pointer to one of those dots and pull the Control Knob out, the washer will fill, agitate, drain and spin.

If you want high agitation and spin, use the dot in REGULAR HEAVY. If you want low agitation and spin, use the dot in KNITS GENTLE. Use the dot in PER-

MANENT PRESS if you want high agitation and a low-speed spin.

For Spinning Only

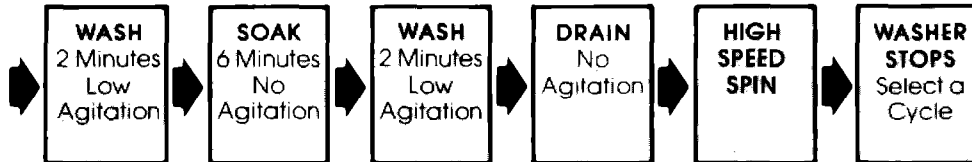


To set the washer so it drains and spins water out of the load, push in on the Control Knob, turn the dial to the right (clockwise) so the pointer is touching the bar just before OFF in any cycle.

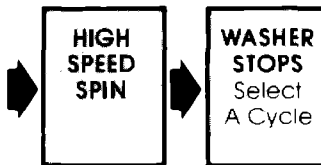
The washer will drain, spin out water and stop. If you want a low-speed spin, use the bar on PERMANENT PRESS or KNITS GENTLE. All the other cycle settings have a high-speed spin.

* Dissolve enzyme pre-soak and detergent powders to help prevent spot fading on colored items. If you use chlorine bleach, it **MUST** be diluted with a quart of warm water and added after the washer fills. See *Laundry Guide* for more information.

Before adding detergent for washing, dissolve in quart of warm water (or use liquid detergent)



* Dissolve enzyme pre-soak and detergent powders to help prevent spot fading on colored items. If you use chlorine bleach, it **MUST** be diluted with a quart of warm water and added after the washer fills. Do not use bleach dispenser. See *Laundry Guide* for more information.



Some stains may need a warm or cold PRE-WASH to help prevent setting.

If you need service or help, we suggest you follow these four steps:

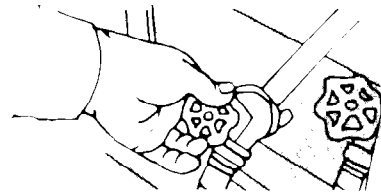
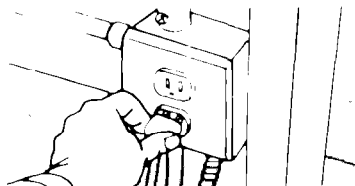
1. Before calling for assistance...

Problems are sometimes caused by little things you can correct without tools.

IF YOUR WASHER DOES NOT FILL:

- Is the power supply cord plugged in?

- Are both water faucets open?
- Is a fuse blown or circuit-breaker tripped?
- Are the water supply hoses kinked?
- Is the Cycle Control Knob set and pulled out?



CYCLE OPERATION / RINSING ONLY / SPINNING ONLY / BEFORE CALLING FOR ASSISTANCE

IF YOUR WASHER DOES NOT SPIN:

- Is the lid closed?
- Is the power supply cord plugged in?
- Is a fuse blown or circuit breaker tripped?

IF WASHER FILLS AND DRAINS WITHOUT RUNNING:

- Make sure that the Cycle Control Knob is pointing to a number in the cycle

IF YOUR WASHER STOPS DURING THE PERMANENT PRESS CYCLE.

- Remember, the washer will stop for about 1½ minutes after the partial drain during the cool-down period in this cycle.

MAKE SURE THE DRAIN HOSE IS HIGHER THAN THE WATER LEVEL IN THE WASHER. IF IT ISN'T...

- The washer may seem to be draining during wash and rinse cycles.
- Water can siphon out. (See Installation Instructions.)

2. If you need assistance ...

Call the Whirlpool COOL-LINE® service assistance telephone number. Dial free from:

Continental U.S. ... (800) 253-1301
Michigan (800) 632-2243
Alaska &
Hawaii (800) 253-1121

and talk with one of our trained Consultants. The Consultant can instruct you in how to obtain satisfactory operation from your appliance or, if service is necessary, recommend a qualified service company in your area.

SYMBOL
OF QUALITY
SERVICE



3. If you need service ...

Whirlpool has a nationwide network of franchised TECH-CARE® Service Companies. TECH-CARE service technicians are trained to fulfill the product warranty and provide after-warranty service, anywhere in the United States. To locate TECH-CARE service in your area, call our COOL-LINE service assistance telephone number (see Step 2) or look in your telephone directory Yellow Pages under:

Part No. 383161

WASHING MACHINES, DRYERS & IRONERS—SERVICING

WHIRLPOOL APPLIANCES
FRANCHISED TECH-CARE SERVICE

SERVICE COMPANIES
X-2 SERVICE CO.
123 Maple 999-9999

OR

ELECTRICAL APPLIANCES— MAJOR—REPAIRING & PARTS

WHIRLPOOL APPLIANCES
FRANCHISED TECH-CARE SERVICE

SERVICE COMPANIES
X-2 SERVICE CO.
123 Maple 999-9999

OR

APPLIANCES—HOUSEHOLD— MAJOR—SERVICE & REPAIR

WHIRLPOOL APPLIANCES
FRANCHISED TECH-CARE SERVICE

SERVICE COMPANIES
X-2 SERVICE CO.
123 Maple 999-9999

4. If you have a problem ...

Call our COOL-LINE service assistance telephone number (see Step 2) and talk with one of our Consultants, or if you prefer, write to:

Mr. Guy Turner, Vice President
Whirlpool Corporation
Administrative Center
2000 US-33 North
Benton Harbor, MI 49022

If you must call or write, please provide: model number, serial number, date of purchase, and a complete description of the problem. This information is needed in order to better respond to your request for assistance.



FSP is a registered trademark of Whirlpool Corporation for quality parts. Look for this symbol of quality whenever you need a replacement part for your Whirlpool appliance.

FSP replacement parts will fit right and work right, because they are made to the same exacting specifications used to build every new Whirlpool appliance.



Whirlpool
Home Appliances



Quality. Our way of life.

Benton Harbor, Michigan. Automatic Washers, Clothes Dryers, Freezers, Refrigerator-Freezers, Ice Makers, Dishwashers, Built-in Ovens and Surface Units, Ranges, Microwave Ovens, Compactors, Room Air Conditioners, Dehumidifiers, Central Heating and Air Conditioning Systems

Printed in U.S.A.