

# 33" ELECTRIC COOKTOP

*MODELS: KECS-1340*

*ESU-330 thru 338*

## INSTALLATION INSTRUCTIONS

### **INSTALLER: FINAL CHECK LIST**

IMPORTANT:

LEAVE THESE INSTRUCTIONS FOR USE BY THE LOCAL ELECTRICAL INSPECTOR

#### **PLACEMENT OF COOKTOP**

- 1. Specified clearances maintained to adjacent surfaces.
- 2. Burner box securely anchored to cabinet top.

#### **ELECTRICAL**

- 1. Burner box properly grounded.
- 2. Separate 240 volt (or 208 volt for special ordered units) A.C., single phase circuit of 40 ampere capacity provided and protected by 40 ampere fuse or circuit breaker.
- 3. All connections made in accordance with local and/or National Electrical Code.

#### **OPERATIONAL**

- 1. Indicator light comes on when any element is turned on.
- 2. Unless instructed to leave for owner, remove all tags, labels, and internal packing material.
- 3. Knobs installed on switches.

### **THANK YOU INSTALLER:**

1. Complete Installation Check List.
2. Leave all literature for customer.
3. Notify dealer that installation is completed.

---

**FOR DETAILED INSTRUCTIONS, FOLLOW METHODS DESCRIBED IN THIS FOLDER.**

**IMPORTANT: Read Before Installing to Save Time, Work, assure proper performance, and owner's warranty protection.**

### CABINETRY

Opening for cooktop in 24" deep countertop should be 19-1/4" deep x 33" long.

See Fig. 1 below for details.

### ELECTRICAL SPECIFICATIONS

Voltage and Frequency	240 volts, (or 208 volts for special ordered units) 60 hertz
Operating Load	30 amperes
Maximum Protective Device Size	40 amperes
Minimum Circuit Size	40 amperes
Wiring must conform to local code and/or National Electrical Code.	

---

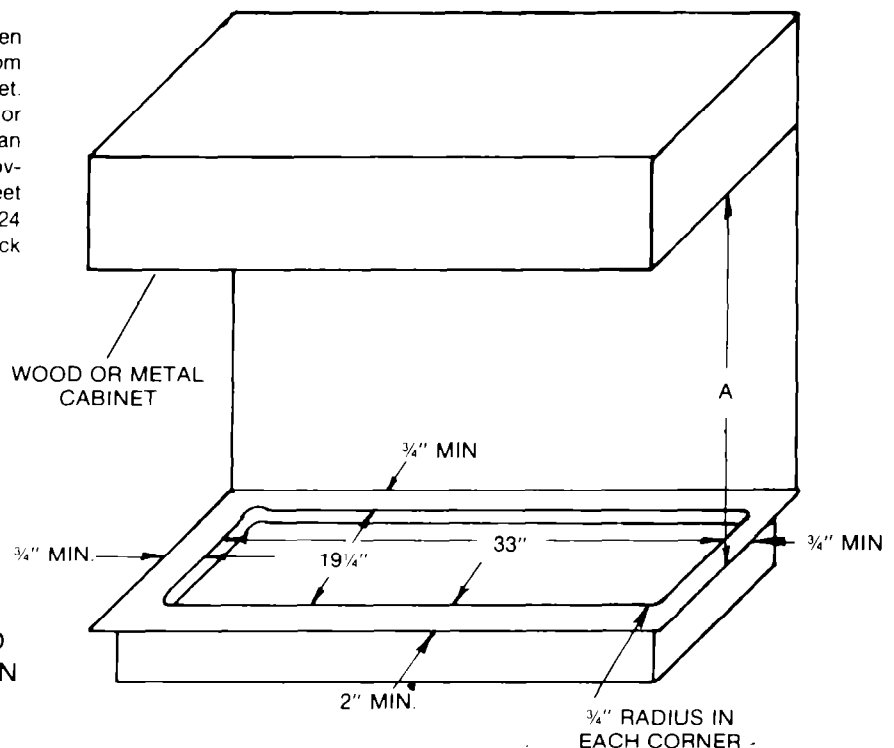
# INSTALLATION INSTRUCTIONS

## CABINET CONSTRUCTION

This surface unit is designed for installation in a base cabinet with a countertop depth of 24". See Fig. 1 for information on location of top cabinet located above cooktop surface.

The countertop cutout dimensions are shown in Fig. 1. The burner box is three inches (3") deep. Additional clearance is required under the back four inches (4") because of the electrical connections. When the cutout illustration is followed, the approved clearance from the cooktop surface to the nearest vertical side or rear wall will be obtained.

A = 30 inches minimum clearance between the top of the cooking surface and the bottom of an unprotected wood or metal cabinet. Or a = 24" minimum when bottom of wood or metal cabinet is protected by not less than 1/2 inch-thick flame retardant millboard covered with not less than No. 28 MSG sheet steel, 0.015 inch-thick stainless steel, 0.024 inch-thick aluminum, or 0.020 inch-thick copper.

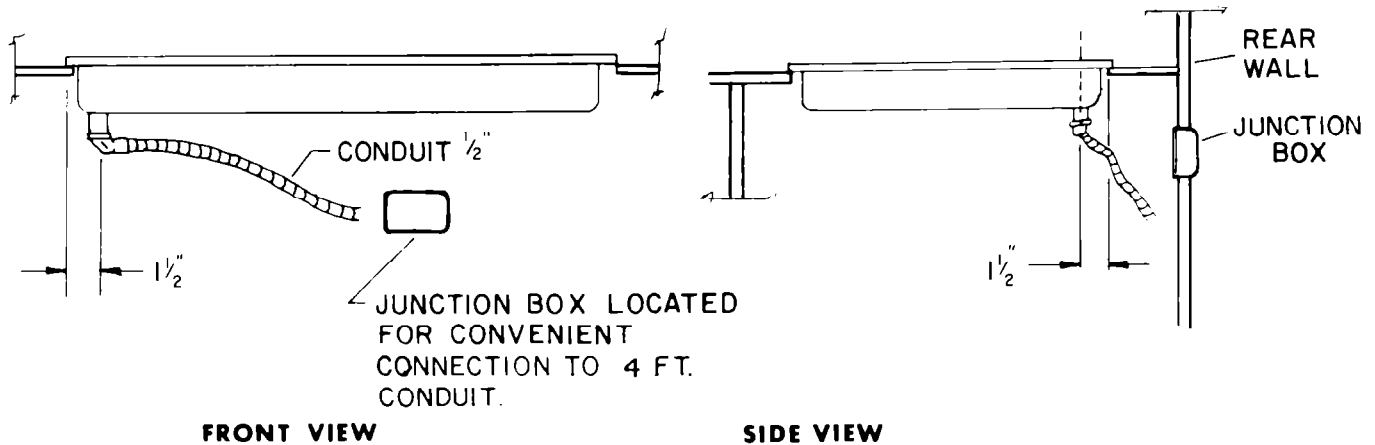


**FIG. 1**  
CUT-OUT DIMENSIONS AND  
INSTALLATION INFORMATION

To eliminate the risk of burns or fire by reaching over the heated surface units, cabinet storage space located above the surface unit should be avoided. If cabinet storage is to be provided, the risk can be reduced by installing a range hood that projects horizontally a minimum of 5 inches beyond the bottom of the cabinets.

## ELECTRICAL

It will be necessary to locate a junction box below the countertop for the connection of the 4-foot length of 1/2" flexible conduit provided with the cooktop. All work should be done by a qualified electrician who is familiar with the National Electrical Code and/or local codes.



## UNPACKING THE UNIT

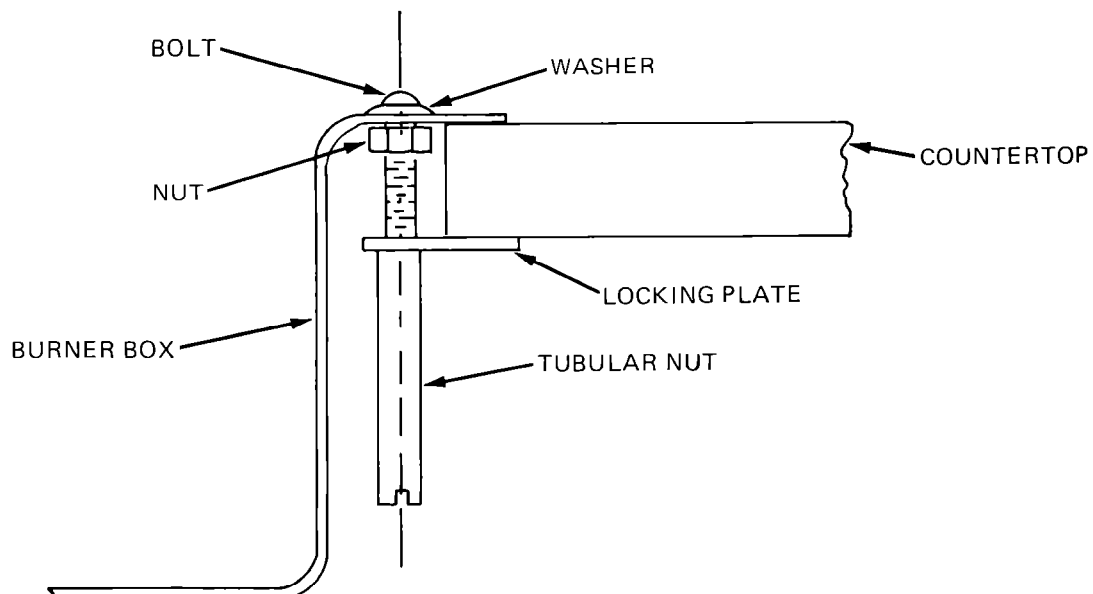
Take unit out of carton and remove all packing material.

Prior to installation, test the electrical service to assure that it agrees with the specifications on the cooktop data plate.

## INSTALLING IN CABINET

Carefully lift the cooktop to a vertical position, so that the mounting hardware may be installed in burner box.

1. Place padded washer over bolt (padded side away from bolt head) and put through holes in burner box from top side. Lock bolt and washer in place with hex nut on bottom of burner box.



2. Put burner box with attached bolts in cabinet cutout. Center and align unit in opening making sure that required clearances are maintained.
3. The following work must be done below the countertop. Slide locking plate (1/2" x 1" with hole) over the lower end of the bolt. Hold in place with tubular nut, which can be tightened with standard slotted screwdriver. Make sure that locking plate is positioned to obtain maximum area possible of countertop.

## ELECTRICAL CONNECTION

**WARNING:** ELECTRICAL AND GROUNDING CONNECTIONS MUST COMPLY WITH APPLICABLE PORTIONS OF THE NATIONAL ELECTRICAL CODE AND/OR OTHER LOCAL ELECTRICAL CODES.

**WARNING:** DISCONNECT ELECTRICAL POWER SUPPLY AND PLACE A TAG AT THE DISCONNECT SWITCH INDICATING THAT YOU ARE WORKING ON THE CIRCUIT.

Connect conduit from the unit to junction box and properly connect power supply leads. The green wire in factory installed conduit is the unit ground wire, not a neutral conductor.

Specifications Subject to Change Without Notice.

