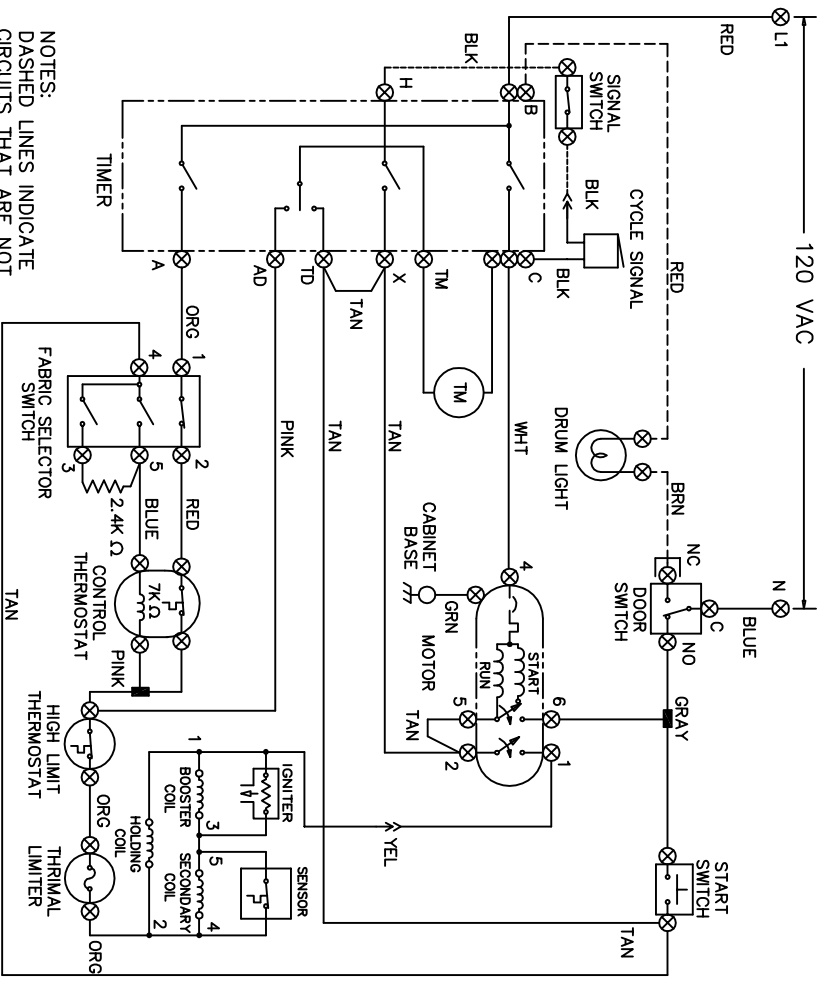
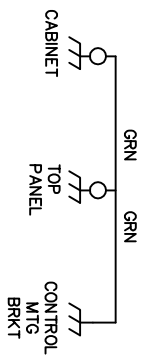


CAUTION: DISCONNECT ELECTRIC CURRENT BEFORE SERVICING. LABEL ALL WIRES PRIOR TO DISCONNECTION WHEN SERVICING CONTROLS. WIRING ERRORS CAN CAUSE IMPROPER AND DANGEROUS OPERATION. VERIFY PROPER OPERATION AFTER SERVICING.



NOTES:
DASHED LINES INDICATE CIRCUITS THAT ARE NOT IN ALL MODELS.

CIRCUIT	AUTO DRY			TIMED DRY (MIN)			AUTO DRY WRINKLE RID		
	L	F	F	L	F	F	L	F	F
TIMER	TM-TD	20	10	0	75	60	40	20	0
TIMER	TM-AD	20	10	0	75	60	40	20	0
HEATER	B-A								
MOTOR	B-C								
BUZZER	X-H								



FABRIC SELECTOR SWITCH

FUNCTION	CIRCUIT
REGULAR	1-2 4-3 4-5
MEDIUM	X X X
LOW	X X X
AIR FLUFF	X X X

X = CONTACTS CLOSED

WIRING CODES	
⊗	QUICK DISCONNECT TERMINAL CONNECTION
+	NO CONNECTION
⊕	MOTOR SWITCH
— —	SPLICE
— —	MOTOR PROTECTOR
⏏	CHASSIS (CABINET) GROUND
⏏	SCREW TERMINAL
⊗	HARNESSE CONNECTOR TERMINAL
⊗	INSULATED TERMINAL

- NOTES:
1. ALL WIRING MUST CONFORM TO LOCAL ELECTRICAL CODES.
 2. CONNECT DRYER TO A 15 AMPERE INDIVIDUAL BRANCH CIRCUIT.
 3. TIMER SHOWN IN OFF POSITION, DOOR SWITCH CLOSED, MOTOR AT REST, THERMOSTAT CLOSED AND FABRIC SELECTOR SWITCH AT REGULAR.

BAR CHART TO THE LEFT REPRESENTS ONE COMPLETE REVOLUTION OF TIMER SHAFT. SHADED PORTION OF BAR CHART INDICATES THE PROPORTIONAL TIMES THAT INTERNAL TIMER CONTACTS ARE CLOSED. A PULSER CAM, LOCATED NEXT TO THE BUZZER CAM AND ROTATING AT 12 REVOLUTIONS PER HOUR, ALLOWS CIRCUIT "X-H" TO CLOSE FOR 5 SECONDS (±3 SECONDS)

A 1 OR 2 TIMES IN THIS AREA
 B 5 TO 6 TIMES IN THIS AREA

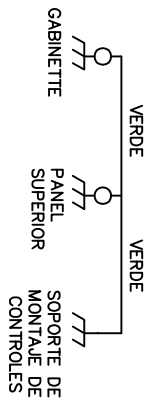
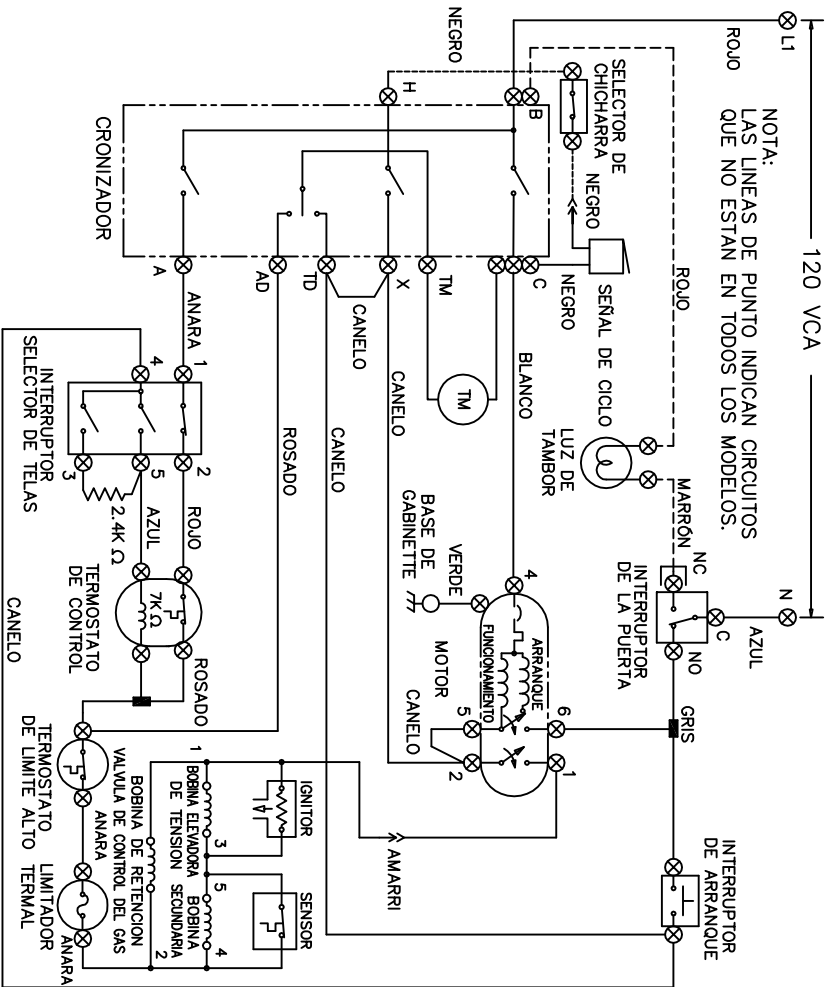


WIRING DIAGRAM
137057600 A

ATENCIÓN: CUANDO SE REPARAN LOS CONTROLES, MARQUE TODOS CABLES CON ETIQUETAS ANTES DE DESCONECTARIOS. CUALQUIER ERRORES DE CABLEADO PUEDEN CAUSAR LA OPERACIÓN INADECUADA Y PELIGROSA. ASEGÚRESE DE QUE LA SECADORA FUNCIONE ADECUADAMENTE DESPUÉS DE REPARARLA.

120 VCA

NOTA:
LAS LINEAS DE PUNTO INDICAN CIRCUITOS QUE NO ESTAN EN TODOS LOS MODELOS.



INTERRUPTOR SELECTOR DE TELAS

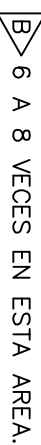
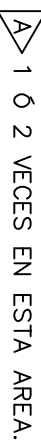
FUNCION	CIRCUITO
REGULAR	1-2 4-3 4-5
MEDIO	X X X
BAJO	X X X
CON AIRE	

X = CERRADOS

CODIGOS DE ALAMBRADOS	
	TERMINAL DE DESCONEXION RAPIDA
	CONEXION
	SIN CONEXION
	INTERRUPTOR DEL MOTOR
	EMPALME
	PROTECTOR DEL MOTOR
	PUESTA A TIERRA DEL CHASIS (GABINETE)
	BORNE DE TORNILLO
	TERMINAL CONECTOR DE CONEXIONADO
	TERMINAL AISLADO

- NOTAS:
- TODAS LAS INSTALACIONES ALAMBRICAS DEBEN CUMPLIR CON LOS CODIGOS ELECTRICOS LOCALES.
 - CONECTAR LA SECADORA A UN CIRCUITO DE RAMAL INDIVIDUAL DE 30 AMPERIOS.
 - EL CRONIZADOR SE MUESTRA EN POSICION APAGADO, EL INTERRUPTOR DE LA PUERTA CERRADO, EL MOTOR EN REPOSE, EL TERMOSTATO CERRADO Y EL INTERRUPTOR SELECTOR DE TELAS EN REGULAR.

CIRCUITO	SECADO AUTOMATICO				SECADO CRONOMETRADO				SECADO AUTOMATICO NO ARRUGAR								
	TM	TM-TD	TM-AD	TM-AD	APAGADO	20	10	0	75	60	40	20	0	47.5	30	15	0
CALENTADOR	B-A																
MOTOR	B-C																
CHICHARRA	X-H																



EL GRAFICO DE BARRAS DE LA IZQUIERDA REPRESENTA UNA REVOLUCION COMPLETA DEL EJE DEL CRONIZADOR.

DIAGRAMA DE CONEXIONES

137057600 A

G