

# Installation Instructions



for  
your new

  
Whirlpool

**ELECTRIC**

SELF CLEANING SLIDE-IN RANGE  
WITH CONVERTIBLE TOP

# INSTALLATION INSTRUCTIONS

Before you begin, read the following instructions completely and carefully. If followed, they will simplify the installation job.

**IMPORTANT: OBSERVE ALL GOVERNING CODES AND ORDINANCES**

SAVE THESE INSTRUCTIONS FOR THE LOCAL ELECTRICAL INSPECTOR'S USE.

## STEP 1 ELECTRICAL REQUIREMENTS

This appliance may be connected by means of permanent "hard wiring" or power supply cord kit.

It is the personal responsibility of the customer to contact a qualified technician to assure that the electrical installation is adequate and is in conformance with the National Electrical Code ANSI/NFPA 70- latest edition and local codes and ordinances.

**THE RANGE MUST BE CONNECTED WITH COPPER WIRE ONLY.** Aluminum wire must not be used to avoid potentially unsatisfactory connections.

### POWER SUPPLY CORD KIT

This appliance must be connected with a power supply cord kit rated at 125/250 volts minimum, 40 amperes, and marked for use with ranges. Cord must have three (3) conductors.

For mobile home installation or in areas where local codes do not permit grounding through neutral, a four (4) conductor power supply cord kit rated at 125/250 volts minimum, 40 amperes, and marked for use with ranges shall be used.

Terminals on end of wires must be either closed loop or open-end spade lugs with upturned ends. Cord must have strain relief clamp.

### MODELS WITH FACTORY-CONNECTED POWER SUPPLY CORD

Some models may be equipped with a factory-connected, three (3) conductor, power supply cord.

In mobile home installations or in areas where local codes do not permit grounding through neutral, a four (4) conductor power supply cord kit rated at 125/250 volts minimum, 40 amperes and investigated for use with ranges shall be used. Terminals on end of wires must be either closed loop or open-end spade lugs with upturned ends.

## STEP 2 ELECTRICAL CONNECTION

**WARNING:** Disconnect electrical supply before making electrical connection. Failure to do so may result in electrical shock or personal injury.

### ELECTRICAL GROUND IS REQUIRED ON THIS APPLIANCE

This appliance is manufactured with the neutral terminal connected to the frame.

1. If local codes permit connection of the frame grounding conductor to the neutral wire of the copper power supply cord:

A. Remove the terminal block cover (lowest wire cover).

B. The terminal nuts are taped to the frame below the terminal block.

NOTE: Do not loosen factory-installed nuts.

C. Connect the neutral wire of the copper power supply cord to the center silver-colored terminal of the terminal block and connect the other wires to the outer terminals. See Figure 1.

Ring-type terminals must be used on the copper power supply cord wires.

D. Replace terminal block cover.

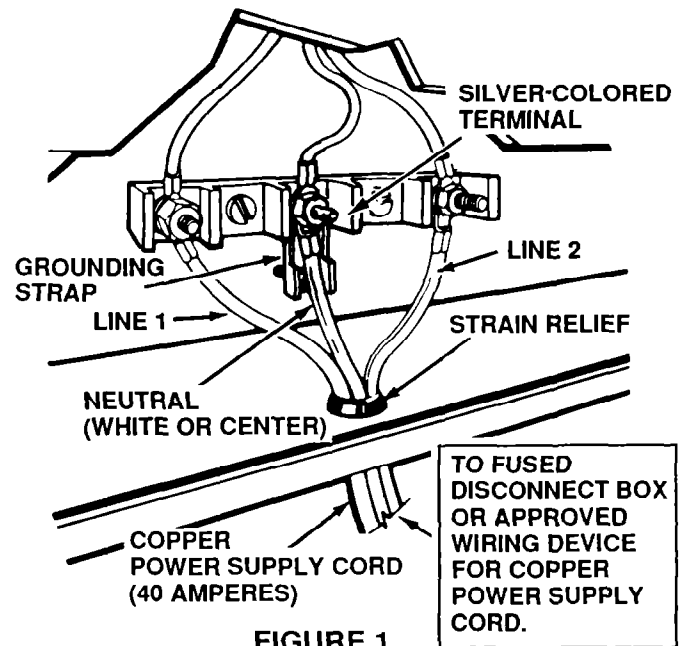


FIGURE 1

2. If local codes DO NOT permit frame grounding to the neutral wire of the copper power supply cord:

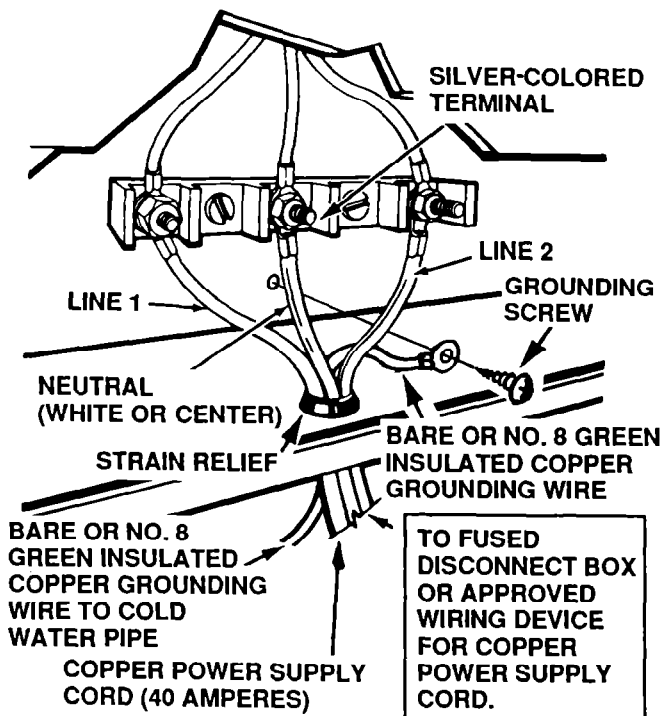
A. Remove terminal block cover.

B. Remove the ground strap from the terminal block and from the appliance frame. Retain the ground screw.

C. Connect the neutral wire of the copper power supply cord to the center silver-colored terminal of the terminal block and connect the other wires to the outer terminals. See **Figure 2**. Ring-type terminals must be used on the copper, power supply cord wires.

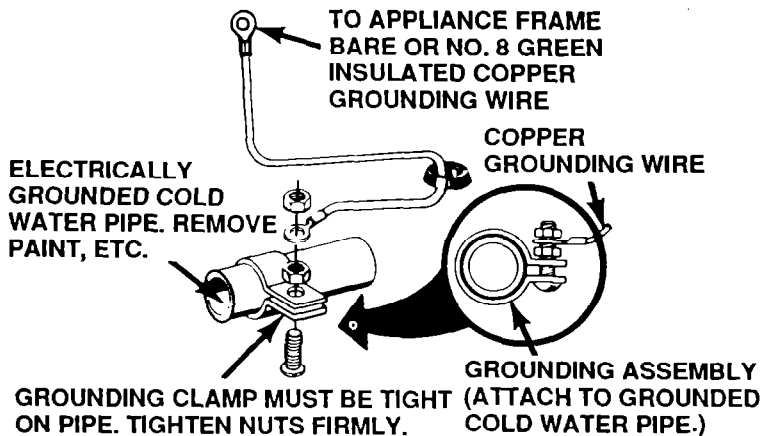
D. Connect a separate insulated, green-colored, copper grounding wire (No. 8 minimum) to a grounded cold water pipe\* by means of a clamp, and then to the frame of the appliance with the grounding screw, using the hole in the frame where the grounding strap was removed. See **Figure 2**. Do Not ground to a gas supply pipe or hot water pipe. Do Not connect the copper power supply cord to electric power until appliance is permanently grounded. See **Figure 3**.

E. Replace terminal block cover.



**FIGURE 2**

\*Cold water pipe must have metal continuity to electrical ground and not be interrupted by plastic, rubber or other electrically insulating connectors (including water meter or pump) without adding a jumper wire at these connections.



**FIGURE 3**

### 3. If connecting to a four-wire electrical system (mobile home):

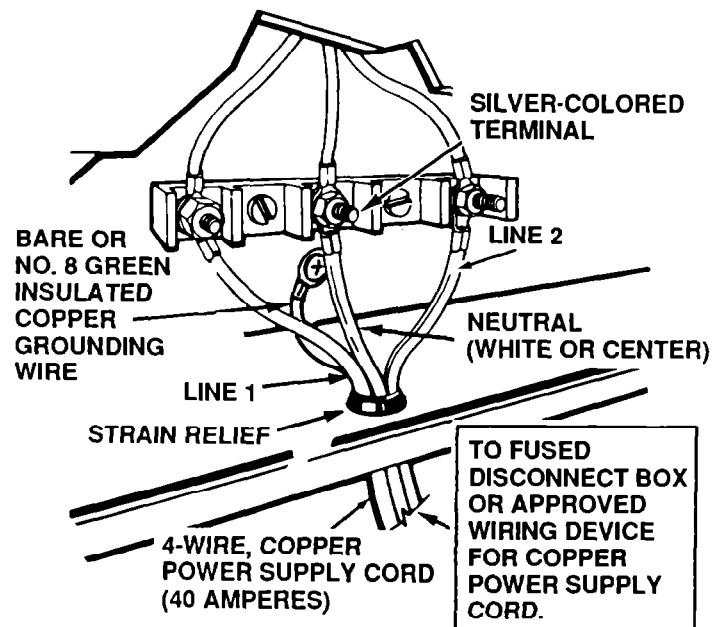
A. Remove terminal block cover.

B. Remove the ground strap from the terminal block and from the appliance frame. Retain the ground screw.

C. Connect the grounding wire (green) of the copper-power supply cord to the frame of the appliance with the grounding screw, using the hole in the frame where the grounding strap was removed. See **Figure 4**.

D. Connect the neutral (white) wire of the copper power supply cord to the center silver-colored terminal of the terminal block and connect the other wires to the outer terminals. Ring-type terminals must be used on the copper power supply cord wires.

E. Replace the terminal block cover.



**FIGURE 4**

## STEP 3 GENERAL

To eliminate the hazard of reaching over heated surface elements, cabinets or storage spaces should not be provided over a range.

If cabinets are provided, the hazard can be reduced by installing a range hood that projects horizontally a minimum of 5 inches beyond the bottom of the cabinets.

When installing the range between base cabinets, refer to **page 4** for the size of the opening needed. Do Not seal range to cabinets.

**CAUTION:** When unpacking the range, do not discard the 4 shipping bolts as these are the leveling legs.

If a service cord is used, the wall receptacle should be located in accordance with the dimensions given on **page 4**.

## "BUILT-IN" INSTALLATION (SEE FIGURE 5)

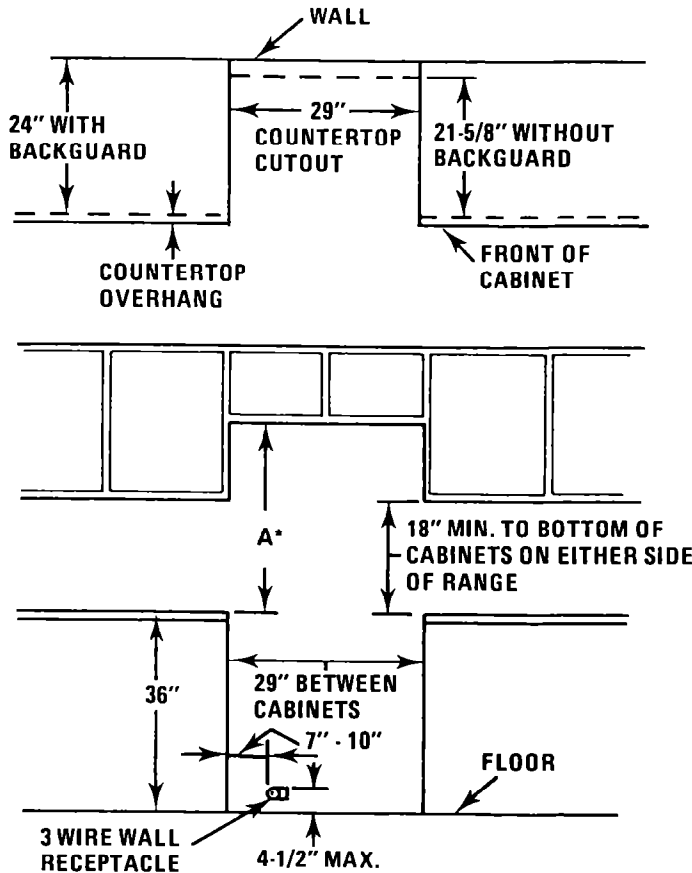


FIGURE 5

The range cooktop overlaps the countertop at the sides and the range rests on the floor.

Install base cabinets 29" apart and be sure they are plumb and level before attaching countertop.

Cutout countertop exactly as shown. Note the countertop cutout dimensions, for installation with or without backguard.

If the backguard is to be installed, see instructions on page 6.

Remove drawer. Adjust leveler legs, so that the underside of the cooktop is 1/8" higher than the height of your countertop.

Slide range into opening. Adjust leveler legs, until underside of cooktop rests on top of countertop.

**\*NOTE:** A = 30" minimum clearance between the top of the cooking platform and the bottom of an unprotected wood or metal cabinet; or A = 24" minimum when bottom of wood or metal cabinet is protected by not less than 1/4" flame retardant millboard covered with not less than No. 28 MSG sheet steel, 0.015" stainless steel, 0.024" aluminum or 0.020" copper.

## FREESTANDING INSTALLATION (SEE FIGURE 6)

Install base cabinets 30 1/8" min. apart and be sure they are plumb and level.

If the backguard or end panels are to be installed, see instructions on page 6.

Adjust leveler legs, so the dimension from the floor to the top of the cooktop is the same as the countertop height (36").

Slide range into opening.

**\*NOTE:** A = 30" minimum clearance between the top of the cooking platform and the bottom of an unprotected wood or metal cabinet; or A = 24" minimum when bottom of wood or metal cabinet is protected by not less than 1/4" flame retardant millboard covered with not less than No. 28 MSG sheet steel, 0.015" stainless steel, 0.024" aluminum or 0.020" copper.

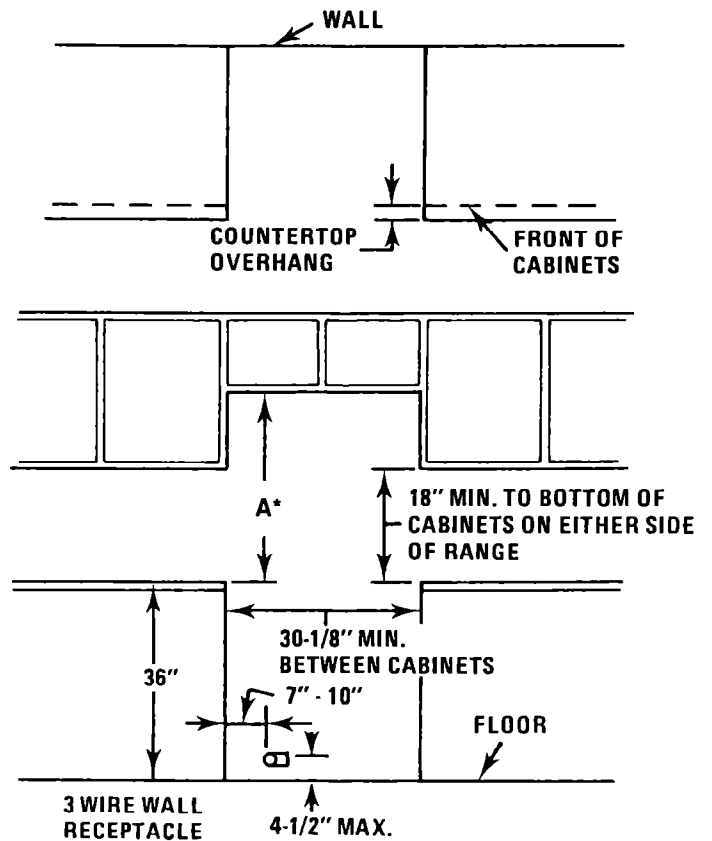


FIGURE 6

# FINAL ELECTRICAL CONNECTION

Make the electrical connection:

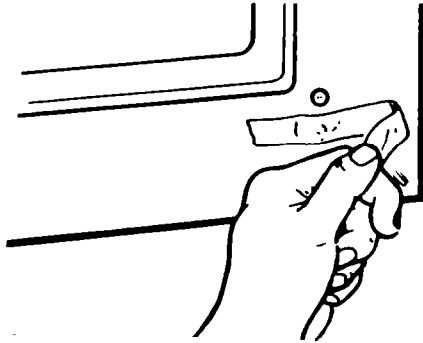
**A.** Plug the flexible copper connector (pigtail) into an approved, receptacle (where local codes permit the use of a pigtail),

OR

**B.** Connect the flexible armored or non-metallic shielded copper cable directly to a fused disconnect box.

Remove the tape holding the oven light switch actuator. See **Figure 7**.

**NOTE:** As shipped from the factory, the oven light switch actuator is held depressed by tape. To prevent switch damage, the switch actuator should be taped whenever the range is transported.



**FIGURE 7**

# CHECK OPERATION

Refer to Use & Care Book packaged with the range to check for proper care and cleaning of your range.

**CAUTION:** Do not touch the elements. They may be hot and you may get burned.

## SURFACE ELEMENTS

1. Turn on each of the four (4) surface elements and check to see that they heat. On models so equipped, check the surface element indicator light(s).

## OVEN ELEMENTS

**CAUTION:** Do not touch the elements. They may be hot and you may get burned.

1. Turn Selector Switch and thermostat to BROIL. Observe the oven elements; the upper element only should heat.

2. Turn the Selector Switch to BAKE and thermostat to 400°F. Observe the oven elements; both elements should heat. The lower element only should turn cherry red.

## CLOCK

Refer to the Use & Care Book packaged in the range oven, for operation of the clock.

# BEFORE YOU CALL FOR SERVICE...

1. Make sure range copper power cord (pigtail) is plugged in.
2. Check to make sure the house fuse or circuit breaker for your range is not blown or open.

**NOTE:** The serial plate for 30" ranges is located on the upper left corner of the oven front frame.

# BACKGUARD ATTACHMENT INSTRUCTIONS (RCK950)

WARNING - Disconnect electrical power to range before beginning installation.

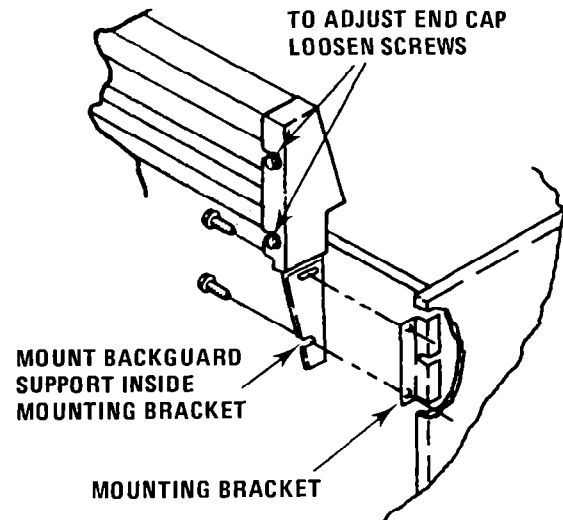
Adjust the width of the backguard to fit inside the countertop cutout.

## TO ADJUST WIDTH OF BACKGUARD:

- A. Loosen screws holding end caps to backguard supports.
- B. Slide end caps in or out.
- C. Retighten screws.

## TO ATTACH TO RANGE:

Align slots in backguard support with holes in mounting brackets. Fasten the backguard supports to the mounting brackets with the screws provided.



# RANGE END PANEL KIT INSTALLATION (RCK952)

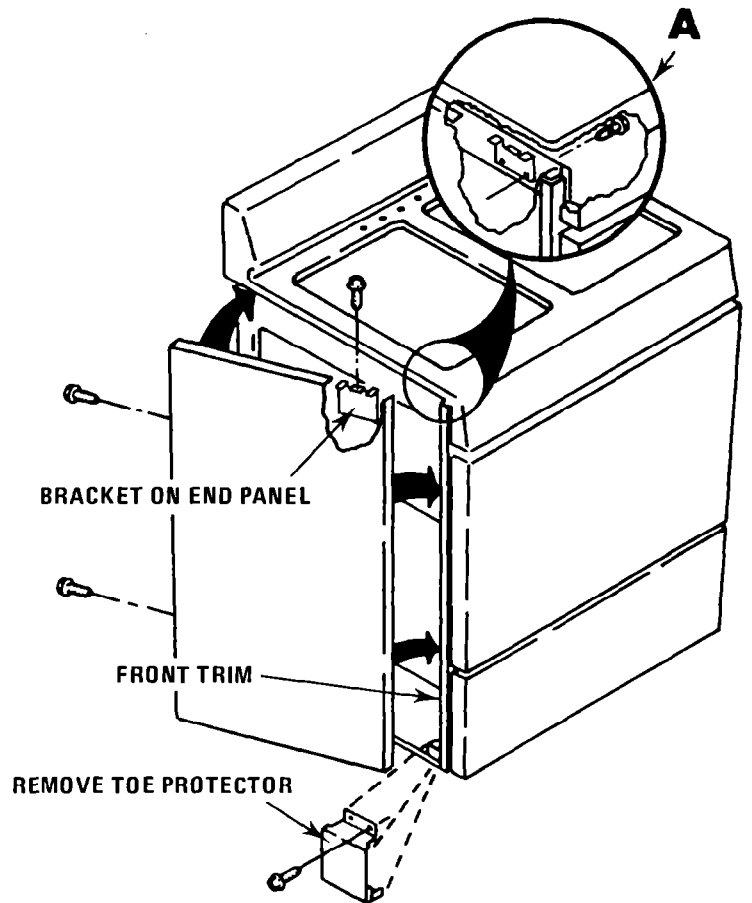
The end panel kit consists of:  
Two End Panels (R.H. & L.H.)  
Two End Panel Brackets  
Eight Screws  
Installation instruction sheet

WARNING - Disconnect electrical power to range before beginning installation.

If the range is equipped with toe protectors, remove them and replace mounting screws.

## TO INSTALL END PANEL:

1. Remove both modules from range top.
2. Attach end panel bracket to end panel with screw provided.
3. Position the end panel behind the front trim and tight to the underside of the cooktop frame.
4. Align the two holes in the back of end panel with holes in range back and attach screws provided.
5. From inside of modular opening, drive a screw into bracket. (Circle A)



In the event your WHIRLPOOL appliance should need service, call the dealer from whom you purchased the appliance or a WHIRLPOOL franchised TECH-CARE® service company. He is in the Yellow Pages of your telephone directory listed under "Appliances-Household-Major-Service and Repair." You can also obtain his name and number by dialing, free, the Whirlpool COOL-LINE® Service (800) 253-1301. Dial just as you normally dial long distance. A special operator will tell you the name and number of your nearest Whirlpool TECH-CARE service outlet. During normal working hours, Whirlpool consultants at this same number will also answer any questions about operating or maintaining your appliance not covered in your Use and Care Guide.

Learn the benefits of using TECH-CARE service for maintaining the quality originally built into your Whirlpool appliances.



WHIRLPOOL CORPORATION BENTON HARBOR, MICHIGAN 49022